



Ferrari
PASSION FOR LIFTING

**TRUCK
Mounted
CRANES**

1 - 90 tm Families

Ferrari
PASSION FOR LIFTING



Series

300

Compact telescopic

Page 6 to page 13

500

Small articulated

Page 14 to page 25

7000

New Age articulated

Page 26 to page 75

700

***Articulated with
double linkage***

Page 76 to page 89

8

Basic articulated NO CE

Page 90 to page 107

9000C

***New Age Endless slewing
with double linkage***

Page 108 to page 117

900

***Endless slewing
with double linkage***

Page 118 to page 123

7000D

New Age Telescopic boom

Page 124 to page 129

SKY

Self-Aligning basket

Page 130 to page 133

Features & Accessories

Ferrari

PASSION FOR LIFTING

tm

1

3

6

9

300

from 1 to 3,5 tm Class

Compact
telescopic

500

from 3 to 8 tm Class

Small
articulated

7000

from 9 to 26 tm Class

New Age
articulated

700

from 29 to 49 tm Class

Articulated
with double linkage

8

from 10 to 26 tm Class

Basic
articulated NO CE

9000 C

from 23 to 66 tm Class

New Age
endless slewing
with double linkage

900

from 80 to 90 tm Class

Endless slewing
with double linkage

7000 D

from 9 to 24 tm Class

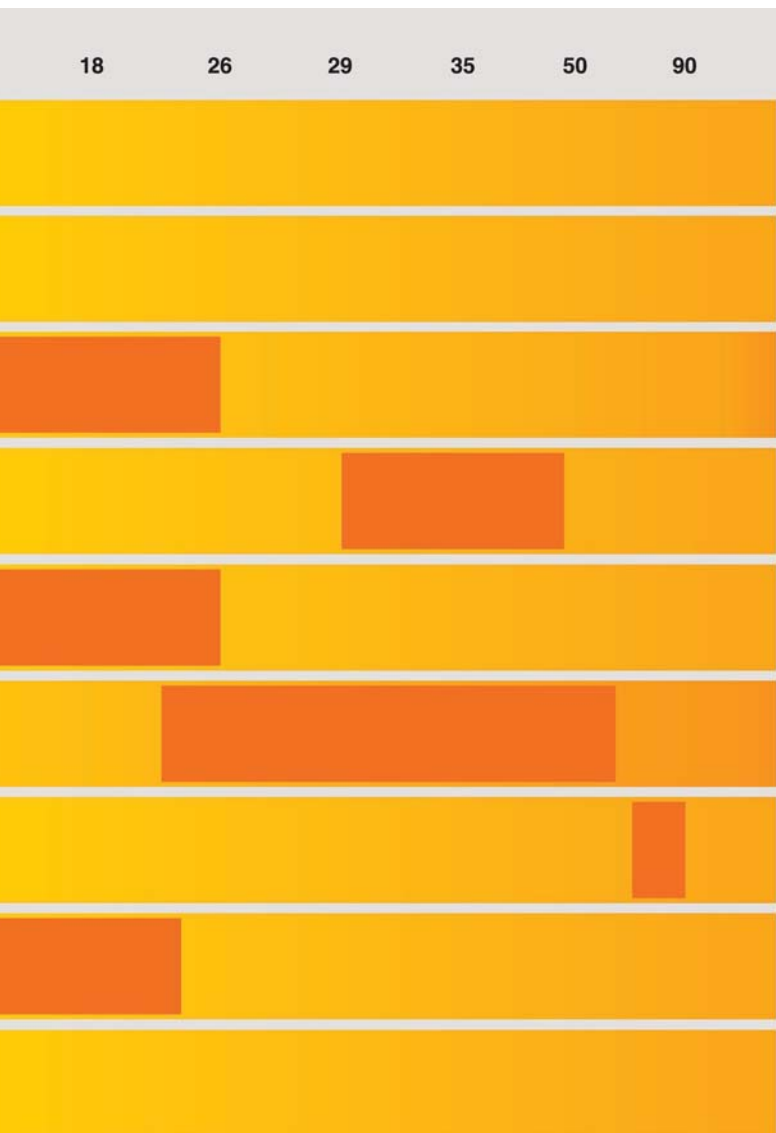
New Age
Telescopic boom

SKY

from 5 to 7 tm Class

Telescopic boom
Self-Aligning basket

Thousand reasons to choose F.lli Ferrari





300 Series

Compact telescopic

310

314

315

317

321

322

326

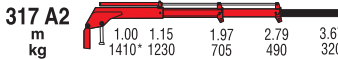
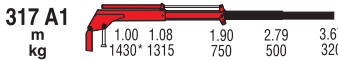
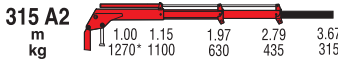
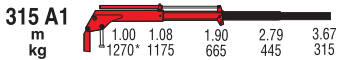
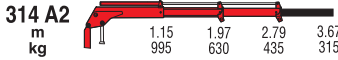
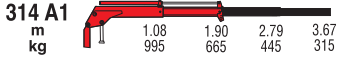
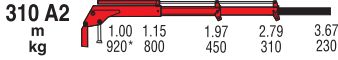
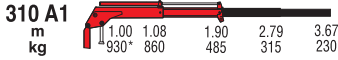
329

330

350



300



*) Theoretical lifting capacity

MODELS	LIFTING MOMENT	SLEWING ANGLE	WORKING PRESSURE	OIL TANK CAPACITY	MAX OIL FLOW	MAX. VERTICAL REACH (HYDR.)	CRANE WEIGHT	DIMENSIONS
	tm	°	bar	l	l/min	m	kg	mm BxhxS
310 A1	0,93	328	180	17,5	5	3,01	145	595x1240x370
310 A2	-	328	180	17,5	5	3,85	175	647x1240x370
314 A1	1,27	335	160	17,5	8	2,98	174	620x1241x430
314 A2	-	335	160	17,5	8	3,8	193	672x1241x430
315 A1	1,27	335	160	17,5	8	2,98	174	620x1241x430
315 A2	-	335	160	17,5	8	3,8	199	672x1241x430
317 A1	1,43	335	170	17,5	6	2,98	174	620x1241x430
317 A2	-	335	170	17,5	6	3,8	199	672x1241x430



300



321 A1		1.25 995	2.17 920	3.18 625	4.14 400		
321 A2		1.33 995	2.25 870	3.18 615	4.14 400		
321 A3		1.40 995	2.32 745	3.25 520	4.17 405	5.13 290	
322 A1		1.00 2000*	1.25 1590	2.17 920	3.18 625	4.14 400	
322 A2		1.00 1410*	1.33 1485	2.25 870	3.18 615	4.14 400	
322 A3		1.00 1980*	1.40 1270	2.32 745	3.25 520	4.17 405	5.13 290
326 A1		1.00 2390*	1.28 1865	2.20 1075	3.20 720	4.19 525	
326 A2		1.00 2360*	1.35 1750	2.27 1010	3.20 715	4.19 525	
326 A3		1.00 2220*	1.42 1565	2.34 930	3.27 660	4.19 510	5.14 410

*) Theoretical lifting capacity

MODELS	LIFTING MOMENT	SWINGING ANGLE	WORKING PRESSURE	OIL TANK CAPACITY	MAX OIL FLOW	MAX. VERTICAL REACH (HYDR.)	CRANE WEIGHT	DIMENSIONS
	tm	°	bar	l	l/min	m	kg	mm BxhxS
321 A1	2	335	160	17,5	8	3,57	216	695x1521x430
321 A2	-	335	160	17,5	8	4,51	240	710x1521x430
321 A3	-	335	150	17,5	8	5,45	262	868x1521x430
322 A1	2	335	160	17,5	8	3,56	216	695x1521x430
322 A2	-	335	160	17,5	8	4,51	243	710x1521x430
322 A3	-	335	150	17,5	8	5,45	265	868x1521x430
326 A1	2,39	335	170	17,5	8	3,58	217	910x1521x440
326 A2	-	335	170	17,5	8	4,49	252	980x1521x440
326 A3	-	335	170	17,5	8	5,39	273	980x1521x440



300



329 A1		1.33 995	2.26 995	3.25 820	4.25 610	
m						
kg						
329 A2		1.39 995	2.32 995	3.25 815	4.25 600	
m						
kg						
329 A3		1.48 995	2.40 995	3.33 775	4.25 600	5.20 460
m						
kg						

330 A1		1.00 2730*	1.33 2055	2.26 1210	3.25 820	4.25 610	
m							
kg							
330 A2		1.00 2690*	1.39 1935	2.32 1150	3.25 815	4.25 600	
m							
kg							
330 A3		1.00 2710*	1.48 1830	2.40 1095	3.33 775	4.25 600	5.20 460
m							
kg							

350 A1		1.00 3450*	1.44 2390	2.50 1380	3.64 935	4.77 690	5.91 530	7.01 405
m								
kg								
350 A2		1.00 3430*	1.52 2255	2.58 1310	3.64 925	4.77 690	5.91 530	7.01 405
m								
kg								
350 A3		1.00 3390*	1.59 2130	2.65 1250	3.71 875	4.77 675	5.91 530	7.01 405
m								
kg								
350 A4		1.00 3360*	1.67 2010	2.73 1185	3.79 830	4.85 635	5.91 520	7.01 405
m								
kg								

*) Theoretical lifting capacity

MODELS	LIFTING MOMENT	SLEWING ANGLE	WORKING PRESSURE	OIL TANK CAPACITY	MAX OIL FLOW	MAX. VERTICAL REACH (HYDR.)	CRANE WEIGHT	DIMENSIONS
	tm	°	bar	l	l/min	m	kg	mm BxhxS
329 A1	2,75	335	160	17,5	8	3,59	263	910x1521x440
329 A2	-	335	160	17,5	8	4,49	295	980x1521x440
329 A3	-	335	160	17,5	8	5,39	321	980x1521x440
330 A1	2,73	335	160	17,5	10	3,58	263	730x1587x440
330 A2	-	335	160	17,5	10	4,49	298	753x1587x440
330 A3	-	335	160	17,5	10	5,39	323	753x1587x440
350 A1	3,45	395	175	17,5	10	3,94	305	976x1702x490
350 A2	-	395	175	17,5	10	4,98	339	1040x1702x490
350 A3	-	395	175	17,5	10	6,01	371	1040x1702x490
350 A4	-	395	175	17,5	10	7,04	399	1040x1702x490



500 Series

Small articulated

531

538

540

541

550

551

561

571

581

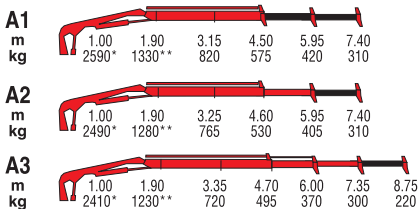


531

531R



RADIOCONTROL



*) Theoretical lifting capacity
 **) Capacity at fixed hook (only if with load limiting device in EC area)

MODELS	LIFTING MOMENT	SLEWING ANGLE	WORKING PRESSURE	OIL TANK CAPACITY	MAX OIL FLOW	MAX. VERTICAL REACH (HYDR.)	CRANE WEIGHT (STAB. STANDARD)	DIMENSIONS
	tm	°	bar	l	l/min	m	kg	mm BxhxS
A1	2,59	370	175	25	8	6,98	450	1860x1590x490
A2	-	370	175	25	8	8,32	485	1920x1590x490
A3	-	370	175	25	8	9,66	515	2000x1590x490

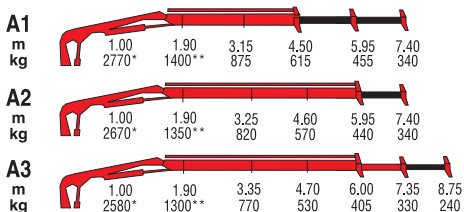


538

538R



RADIOCONTROL



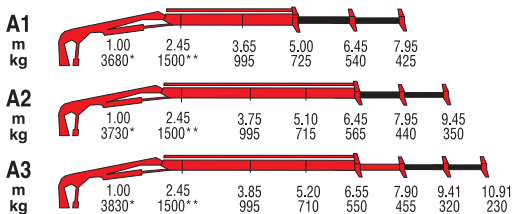
*) Theoretical lifting capacity
 **) Capacity at fixed hook (only if with load limiting device in EC area)

MODELS	LIFTING MOMENT	SLEWING ANGLE	WORKING PRESSURE	OIL TANK CAPACITY	MAX OIL FLOW	MAX. VERTICAL REACH (HYDR.)	CRANE WEIGHT (STAB. STANDARD)	DIMENSIONS
	tm	°	bar	l	l/min	m	kg	mm BxhxS
A1	2,77	370	185	25	8	6,98	450	1860x1590x490
A2	-	370	185	25	8	8,32	485	1920x1590x490
A3	-	370	185	25	8	9,66	515	2000x1590x490



540

540R



*) Theoretical lifting capacity
 **) Capacity at fixed hook (only if with load limiting device in EC area)

MODELS	LIFTING MOMENT	SLEWING ANGLE	WORKING PRESSURE	OIL TANK CAPACITY	MAX OIL FLOW	MAX. VERTICAL REACH (HYDR.)	CRANE WEIGHT (STAB. STANDARD)	DIMENSIONS
	tm	°	bar	l	l/min	m	kg	mm BxhxS
A1	3,73	370	215	30	16	7,75	593	1966x1780x500
A2	-	370	215	30	16	9,14	636	1966x1780x500
A3	-	370	215	30	16	10,51	677	2025x1780x620



541

541R



RADIOCONTROL

A1		1.00	2.20	3.86	4.98	6.44	
m							
kg		3980*	1750**	995	800	550	
A2		1.00	2.20	3.67	5.03	6.39	7.85
m							
kg		3820*	1650**	990	760	590	430
A3		1.00	2.20	3.77	5.13	6.49	7.85
m							
kg		3690*	1650**	980	690	530	330
A4		1.00	2.20	3.87	5.23	6.59	7.95
m							
kg		3480*	1580**	900	630	480	380
							9.31
							10.77

*) Theoretical lifting capacity

***) Capacity at fixed hook (only if with load limiting device in EC area)

MODELS	LIFTING MOMENT	SLEWING ANGLE	WORKING PRESSURE	OIL TANK CAPACITY	MAX OIL FLOW	MAX. VERTICAL REACH (HYDR.)	CRANE WEIGHT (STAB. STANDARD)	DIMENSIONS
	tm	°	bar	l	l/min	m	kg	mm BxhxS
A1	3,98	400	240	35	15	7,82	640	2170x1730x535
A2	-	400	240	35	15	9,26	690	2170x1730x535
A3	-	400	240	35	15	10,65	740	2170x1730x535
A4	-	400	240	35	15	12,06	785	2170x1730x535

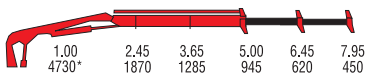


550

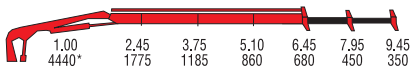
550R



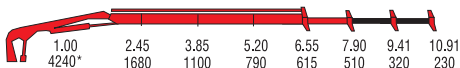
A1
m
kg



A2
m
kg



A3
m
kg



*) Theoretical lifting capacity

MODELS	LIFTING MOMENT	SLEWING ANGLE	WORKING PRESSURE	OIL TANK CAPACITY	MAX OIL FLOW	MAX. VERTICAL REACH (HYDR.)	CRANE WEIGHT (STAB. STANDARD)	DIMENSIONS
	tm	°	bar	l	l/min	m	kg	mm BxhxS
A1	4,73	370	250	30	16	7,75	593	1966x1780x500
A2	-	370	250	30	16	9,14	636	1966x1780x500
A3	-	370	250	30	16	10,51	677	2025x1780x620

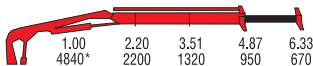


551

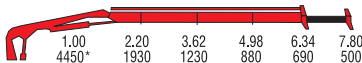
551R



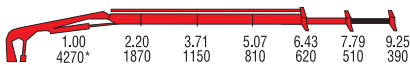
A1
m
kg



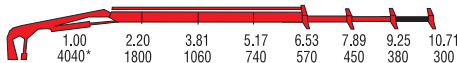
A2
m
kg



A3
m
kg



A4
m
kg



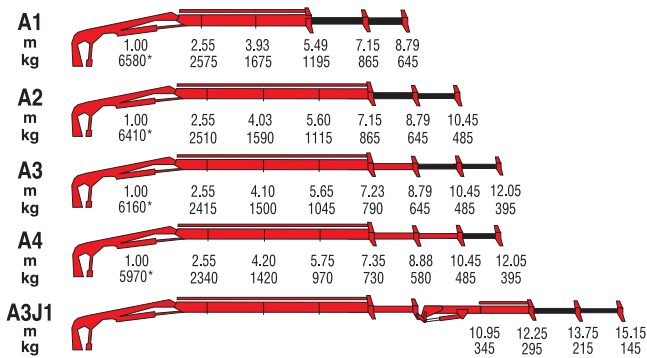
*) Theoretical lifting capacity

MODELS	LIFTING MOMENT	SLEWING ANGLE	WORKING PRESSURE	OIL TANK CAPACITY	MAX OIL FLOW	MAX. VERTICAL REACH (HYDR.)	CRANE WEIGHT (STAB. STANDARD)	DIMENSIONS
	tm	°	bar	l	l/min	m	kg	mm BxhxS
A1	4,84	400	265	35	15	7,82	640	2110x1730x535
A2	-	400	265	35	15	9,23	690	2110x1730x535
A3	-	400	265	35	15	10,65	740	2110x1730x535
A4	-	400	265	35	15	12,06	785	2110x1730x535



561

561R



*) Theoretical lifting capacity

MODELS	LIFTING MOMENT	SLEWING ANGLE	WORKING PRESSURE	OIL TANK CAPACITY	MAX OIL FLOW	MAX. VERTICAL REACH (HYDR.)	CRANE WEIGHT (STAB. STANDARD)	DIMENSIONS
	tm	°	bar	l	l/min	m	kg	mm BxhxS
A1	6,58	387	245	35	20	8,34	880	2300x1960x610
A2	-	387	245	35	20	9,81	950	2300x1960x610
A3	-	387	245	35	20	11,34	1010	2300x1960x610
A4	-	387	245	35	20	12,90	1060	2300x1960x610
A3J1	-	387	245	35	20	14,68	1190	2300x1960x735

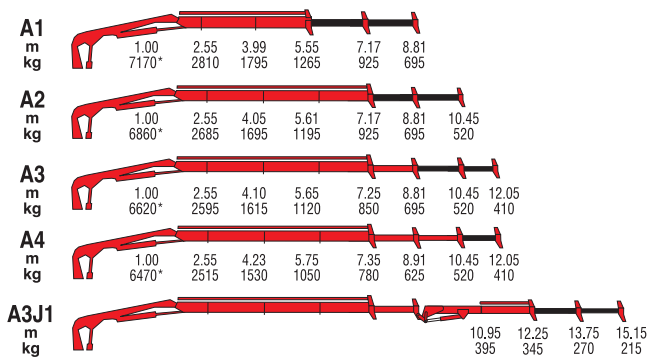


571

571R



RADIOCONTROL



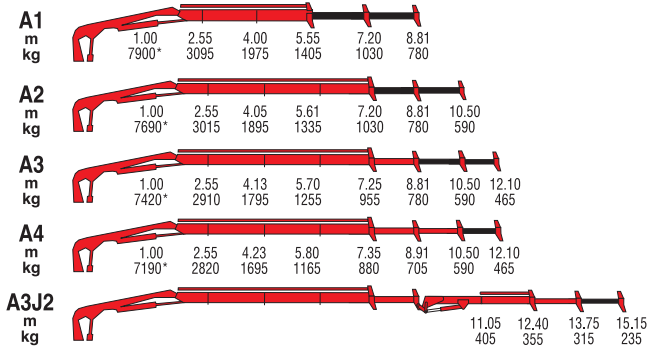
*) Theoretical lifting capacity

MODELS	LIFTING MOMENT	SLEWING ANGLE	WORKING PRESSURE	OIL TANK CAPACITY	MAX OIL FLOW	MAX. VERTICAL REACH (HYDR.)	CRANE WEIGHT (STAB. STANDARD)	DIMENSIONS
	tm	°	bar	l	l/min	m	kg	mm BxhxS
A1	7,17	387	265	35	20	8,50	880	2300x2000x600
A2	-	387	265	35	20	10,20	960	2300x2000x600
A3	-	387	265	35	20	11,70	1020	2300x2000x600
A4	-	387	265	35	20	13,30	1080	2300x2000x600
A3J1	-	387	265	35	20	15,20	1200	2305x2000x730



581

581R



*) Theoretical lifting capacity

MODELS	LIFTING MOMENT tm	SLEWING ANGLE °	WORKING PRESSURE bar	OIL TANK CAPACITY l	MAX OIL FLOW l/min	MAX. VERTICAL REACH (HYDR.) m	CRANE WEIGHT (STAB. STANDARD) kg	DIMENSIONS mm BxhxS
A1	7,9	387	285	35	20	8,50	910	2300x2000x600
A2	-	387	285	35	20	10,20	990	2300x2000x600
A3	-	387	285	35	20	11,70	1050	2300x2000x600
A4	-	387	285	35	20	13,30	1110	2300x2000x600
A3J2	-	387	285	35	20	16,60	1260	2305x2000x730





NEW AGE

7000 Series

Articulated

7090B

7091C

70915C

7095C

7103C

7111C

71115C

7112B

7121C

7125C

7130B

7131C

71315C

7143C

7153C

7160B

7161C

71615C

7173C

7183C

7210B

7213C

72135C

7223C

7231C

7240B

7243C

72435C

7245C

7261C



7090B


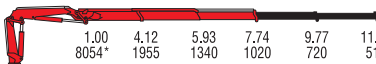
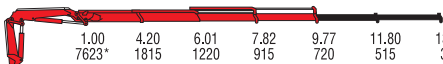
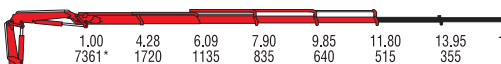
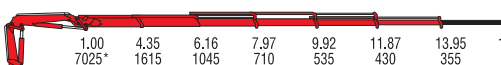


*) Theoretical lifting capacity

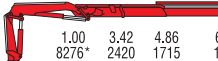

MODELS	LIFTING MOMENT	SLEWING ANGLE	WORKING PRESSURE	OIL TANK CAPACITY	MAX OIL FLOW	MAX. VERTICAL REACH (HYDR.)	CRANE WEIGHT (STAB. STANDARD)	DIMENSIONS
	tm	°	bar	l	l/min	m	kg	mm BxhxS
A1	8,7	425	310	75	40	9,1	1140	2305x2070x840
A2	-	425	310	75	40	10,7	1220	2305x2070x840
A3	-	425	310	75	40	12,6	1300	2305x2070x840
A4	-	425	310	75	40	14,4	1370	2305x2070x840



7091C

A1		1.00	4.12	5.93					
m									
kg		8322*	2020	1410					
A2		1.00	4.12	5.93	7.74	9.77	11.80		
m									
kg		8054*	1955	1340	1020	720	515		
A3		1.00	4.20	6.01	7.82	9.77	11.80	13.95	
m									
kg		7623*	1815	1220	915	720	515	355	
A4		1.00	4.28	6.09	7.90	9.85	11.80	13.95	16.13
m									
kg		7361*	1720	1135	835	640	515	355	280
A5		1.00	4.35	6.16	7.97	9.92	11.87	13.95	16.13
m									
kg		7025*	1615	1045	710	535	430	355	280

Short boom


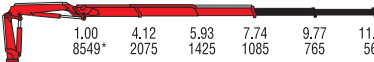

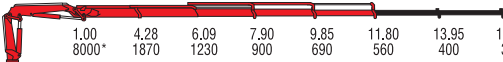
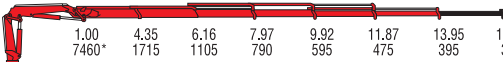
SCA2		1.00	3.42	4.86	6.67			
m								
kg		8276*	2420	1715	1215			
SCA3		1.00	3.50	4.95	6.75	8.70		
m								
kg		8032*	2295	1570	1120	850		

7091SC

*) Theoretical lifting capacity

MODELS	LIFTING MOMENT	SLEWING ANGLE	WORKING PRESSURE	OIL TANK CAPACITY	MAX OIL FLOW	MAX. VERTICAL REACH (HYDR.)	CRANE WEIGHT (STAB. STANDARD)	DIMENSIONS
	tm	°	bar	l	l/min	m	kg	
A1	8,3	425	315	130	40	9,3	1215	2290x2085x840
A2	-	425	315	130	40	10,9	1305	2290x2085x840
A3	-	425	315	130	40	13,1	1395	2290x2085x840
A4	-	425	315	130	40	15,1	1480	2290x2085x840
A5	-	425	315	130	40	17,3	1555	2290x2085x885
SC A2	8,2	425	315	75	40	10,1	1280	2285x2085x840
SC A3	-	425	315	75	40	12,2	1370	2285x2085x840


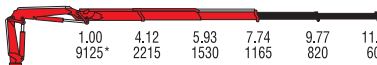
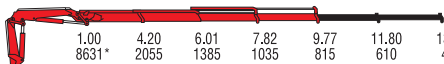
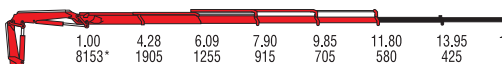
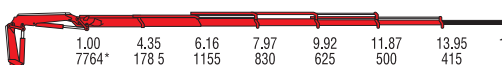


A1		1.00	4.12	5.93					
m									
kg		8858*	2150	1500					
A2		1.00	4.12	5.93	7.74	9.77	11.80		
m									
kg		8549*	2075	1425	1085	765	565		
A3		1.00	4.20	6.01	7.82	9.77	11.80	13.95	
m									
kg		8316*	1980	1330	995	785	580	400	
A4		1.00	4.28	6.09	7.90	9.85	11.80	13.95	16.13
m									
kg		8000*	1870	1230	900	690	560	400	335
A5		1.00	4.35	6.16	7.97	9.92	11.87	13.95	16.13
m									
kg		7460*	1715	1105	790	595	475	395	310

*) Theoretical lifting capacity

MODELS	LIFTING MOMENT	SLEWING ANGLE	WORKING PRESSURE	OIL TANK CAPACITY	MAX OIL FLOW	MAX. VERTICAL REACH (HYDR.)	CRANE WEIGHT (STAB. STANDARD)	DIMENSIONS
	tm	°	bar	l	l/min	m	kg	mm BxhxS
A1	8,8	425	335	75	40	9,3	1215	2290x2085x840
A2	-	425	335	75	40	10,9	1305	2290x2085x840
A3	-	425	335	75	40	13,1	1395	2290x2085x840
A4	-	425	335	75	40	15,1	1480	2290x2085x840
A5	-	425	335	75	40	17,3	1555	2290x2085x885




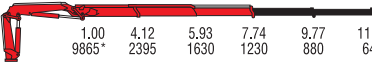
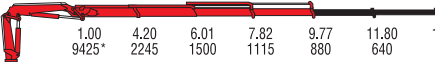
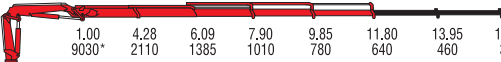
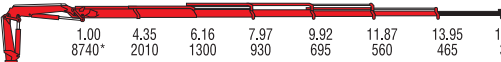
A1		1.00	4.12	5.93					
m									
kg		9414*	2285	1600					
A2		1.00	4.12	5.93	7.74	9.77	11.80		
m									
kg		9125*	2215	1530	1165	820	605		
A3		1.00	4.20	6.01	7.82	9.77	11.80	13.95	
m									
kg		8631*	2055	1385	1035	815	610	430	
A4		1.00	4.28	6.09	7.90	9.85	11.80	13.95	16.13
m									
kg		8153*	1905	1255	915	705	580	425	355
A5		1.00	4.35	6.16	7.97	9.92	11.87	13.95	16.13
m									
kg		7764*	1785	1155	830	625	500	415	330

*) Theoretical lifting capacity


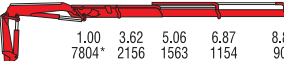
MODELS	LIFTING MOMENT	SLEWING ANGLE	WORKING PRESSURE	OIL TANK CAPACITY	MAX OIL FLOW	MAX. VERTICAL REACH (HYDR.)	CRANE WEIGHT (STAB. STANDARD)	DIMENSIONS
	tm	°	bar	l	l/min	m	kg	mm BxhxS
A1	9,5	425	350	75	40	9,3	1215	2290x2085x840
A2	-	425	350	75	40	10,9	1305	2290x2085x840
A3	-	425	347	75	40	13,1	1395	2290x2085x840
A4	-	425	340	75	40	15,1	1480	2290x2085x840
A5	-	425	336	75	40	17,3	1555	2290x2085x885



7111C

A1		1.00	4.12	5.93					
m									
kg		10195*	2475	1715					
A2		1.00	4.12	5.93	7.74	9.77	11.80		
m									
kg		9865*	2395	1630	1230	880	640		
A3		1.00	4.20	6.01	7.82	9.77	11.80	13.95	
m									
kg		9425*	2245	1500	1115	880	640	460	
A4		1.00	4.28	6.09	7.90	9.85	11.80	13.95	16.14
m									
kg		9030*	2110	1385	1010	780	640	460	370
A5		1.00	4.35	6.16	7.97	9.92	11.87	13.95	16.14
m									
kg		8740*	2010	1300	930	695	560	465	370

Short boom

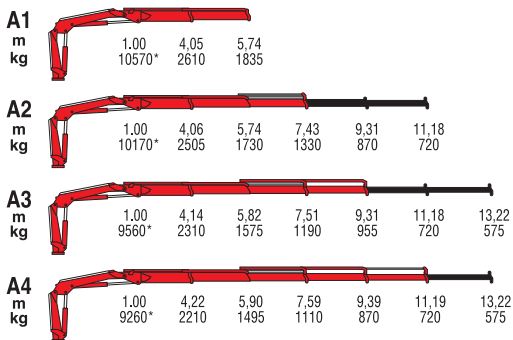
SCA2		1.00	3.55	4.99	6.80			
m								
kg		7920*	2231	1643	1239			
SCA3		1.00	3.62	5.06	6.87	8.82		
m								
kg		7804*	2156	1563	1154	906		

7111SC

*) Theoretical lifting capacity

MODELS	LIFTING MOMENT	SLEWING ANGLE	WORKING PRESSURE	OIL TANK CAPACITY	MAX OIL FLOW	MAX. VERTICAL REACH (HYDR.)	CRANE WEIGHT (STAB. STANDARD)	DIMENSIONS
	tm	°	bar	l	l/min	m	kg	
A1	10,2	425	315	75	40	9,5	1315	2280x2110x840
A2	-	425	315	75	40	11,3	1425	2280x2110x840
A3	-	425	315	75	40	13,3	1530	2280x2110x840
A4	-	425	315	75	40	15,4	1625	2280x2110x840
A5	-	425	315	75	40	17,4	1715	2280x2110x885
SC A2	8,4	425	315	75	40	10,3	1390	2280x2110x840
SC A3	-	425	315	75	40	12,4	1500	2280x2110x840


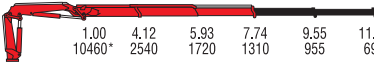
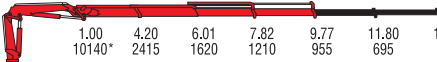
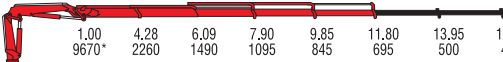
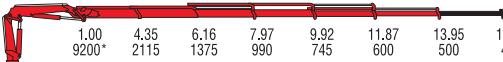




*) Theoretical lifting capacity

MODELS	LIFTING MOMENT	SLEWING ANGLE	WORKING PRESSURE	OIL TANK CAPACITY	MAX OIL FLOW	MAX. VERTICAL REACH (HYDR.)	CRANE WEIGHT (STAB. STANDARD)	DIMENSIONS
	tm	°	bar	l	l/min	m	kg	mm BxhxS
A1	10,5	425	300	75	40	9,2	1240	2310x2100x840
A2	-	425	300	75	40	10,8	1340	2310x2100x840
A3	-	425	300	75	40	12,6	1430	2310x2100x840
A4	-	425	300	75	40	14,4	1520	2310x2100x840


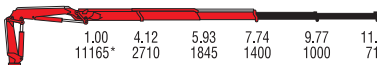
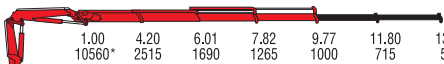
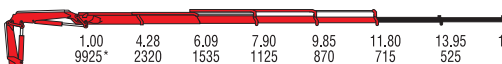
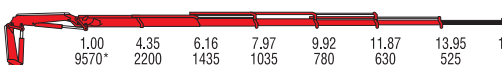


A1		1.00	4.12	5.93					
m									
kg		10790*	2620	1815					
A2		1.00	4.12	5.93	7.74	9.55	11.80		
m									
kg		10460*	2540	1720	1310	955	695		
A3		1.00	4.20	6.01	7.82	9.77	11.80	13.95	
m									
kg		10140*	2415	1620	1210	955	695	500	
A4		1.00	4.28	6.09	7.90	9.85	11.80	13.95	16.14
m									
kg		9670*	2260	1490	1095	845	695	500	405
A5		1.00	4.35	6.16	7.97	9.92	11.87	13.95	16.14
m									
kg		9200*	2115	1375	990	745	600	500	405

*) Theoretical lifting capacity

MODELS	LIFTING MOMENT	SLEWING ANGLE	WORKING PRESSURE	OIL TANK CAPACITY	MAX OIL FLOW	MAX. VERTICAL REACH (HYDR.)	CRANE WEIGHT (STAB. STANDARD)	DIMENSIONS
	tm	°	bar	l	l/min	m	kg	mm BxhxS
A1	10,8	425	335	75	40	9,5	1315	2280x2110x840
A2	-	425	335	75	40	11,3	1425	2280x2110x840
A3	-	425	335	75	40	13,3	1530	2280x2110x840
A4	-	425	330	75	40	15,4	1625	2280x2110x840
A5	-	425	330	75	40	17,5	1715	2280x2110x885

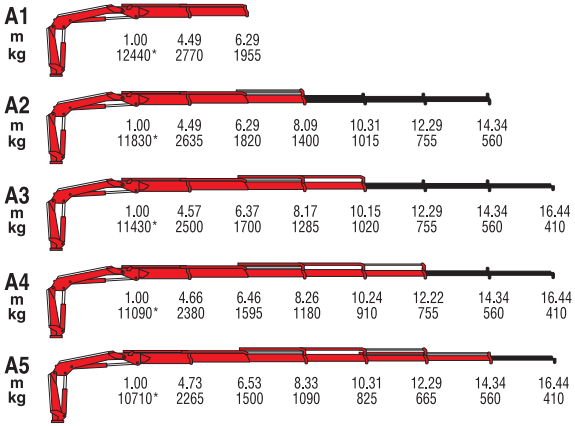


A1		1.00	4.12	5.93					
m									
kg		11490*	2790	1935					
A2		1.00	4.12	5.93	7.74	9.77	11.80		
m									
kg		11165*	2710	1845	1400	1000	715		
A3		1.00	4.20	6.01	7.82	9.77	11.80	13.95	
m									
kg		10560*	2515	1690	1265	1000	715	523	
A4		1.00	4.28	6.09	7.90	9.85	11.80	13.95	16.14
m									
kg		9925*	2320	1535	1125	870	715	525	430
A5		1.00	4.35	6.16	7.97	9.92	11.87	13.95	16.14
m									
kg		9570*	2200	1435	1035	780	630	525	430

*) Theoretical lifting capacity

MODELS	LIFTING MOMENT	SLEWING ANGLE	WORKING PRESSURE	OIL TANK CAPACITY	MAX OIL FLOW	MAX. VERTICAL REACH (HYDR.)	CRANE WEIGHT (STAB. STANDARD)	DIMENSIONS
	tm	°	bar	l	l/min	m	kg	mm BxhxS
A1	11,5	425	350	75	40	9,5	1315	2280x2110x840
A2	-	425	350	75	40	11,3	1425	2280x2110x840
A3	-	425	345	75	40	13,3	1530	2280x2110x840
A4	-	425	340	75	40	15,4	1625	2280x2110x840
A5	-	425	340	75	40	17,5	1715	2280x2110x885

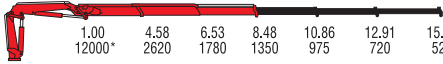
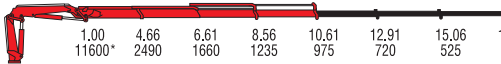
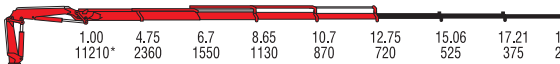
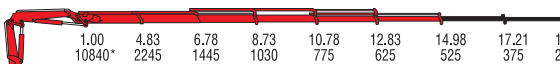
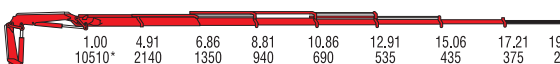






*) Theoretical lifting capacity


MODELS	LIFTING MOMENT	SLEWING ANGLE	WORKING PRESSURE	OIL TANK CAPACITY	MAX OIL FLOW	MAX. VERTICAL REACH (HYDR.)	CRANE WEIGHT (STAB. STANDARD)	DIMENSIONS
	tm	°	bar	l	l/min	m	kg	mm BxhxS
A1	12,4	425	285	130	60	9,9	1545	2480x2295x825
A2	-	425	285	130	60	11,7	1665	2480x2295x825
A3	-	425	285	130	60	13,7	1780	2480x2295x825
A4	-	425	285	130	60	15,7	1870	2480x2295x825
A5	-	425	285	130	60	17,8	1955	2480x2295x895



A2 m kg		1.00 12000*	4.58 2620	6.53 1780	8.48 1350	10.86 975	12.91 720	15.06 525	
A3 m kg		1.00 11600*	4.66 2490	6.61 1660	8.56 1235	10.61 975	12.91 720	15.06 525	17.21 375
A4 m kg		1.00 11210*	4.75 2360	6.7 1550	8.65 1130	10.7 870	12.75 720	15.06 525	17.21 375 19.31 280
A5 m kg		1.00 10840*	4.83 2245	6.78 1445	8.73 1030	10.78 775	12.83 625	14.98 525	17.21 375 19.31 280
A6 m kg		1.00 10510*	4.91 2140	6.86 1350	8.81 940	10.86 690	12.91 535	15.06 435	17.21 375 19.31 280
A3J2 m kg							13.30 430	14.7 380	16.17 340 17.75 260
A4J2 m kg							15.45 250	16.8 220	18.30 200 19.80 130

Short boom

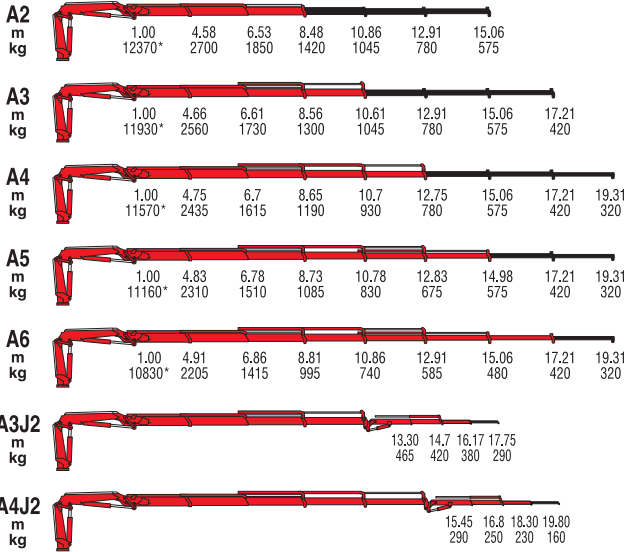
A2 SC m kg		1.00 12510*	3.85 3250	5.25 2330	7.05 1710
-------------------------	---	----------------	--------------	--------------	--------------

A3 SC m kg		1.00 12150*	3.90 3115	5.33 2220	7.15 1610	9.10 1255
-------------------------	---	----------------	--------------	--------------	--------------	--------------

*) Theoretical lifting capacity

MODELS	LIFTING MOMENT	SLEWING ANGLE	WORKING PRESSURE	OIL TANK CAPACITY	MAX OIL FLOW	MAX. VERTICAL REACH (HYDR.)	CRANE WEIGHT (STAB. STANDARD)	DIMENSIONS
	tm	°	bar	l	l/min	m	kg	mm BxhxS
A2	12,0	425	290	130	60	12,2	1820	2450x2330x825
A3	-	425	290	130	60	14,4	1935	2450x2330x825
A4	-	425	290	130	60	16,5	2040	2450x2330x825
A5	-	425	290	130	60	18,7	2140	2450x2330x895
A6	-	425	290	130	60	21,0	2230	2450x2330x895
A3J2	-	425	290	130	60	19,9	2245	2450x2450x940
A4J2	-	425	290	130	60	22,0	2350	2475x2497x940
SC A2	12,5	425	300	130	60	10,9	1735	2455x2330x825
SC A3	-	425	300	130	60	12,9	1835	2455x2330x825

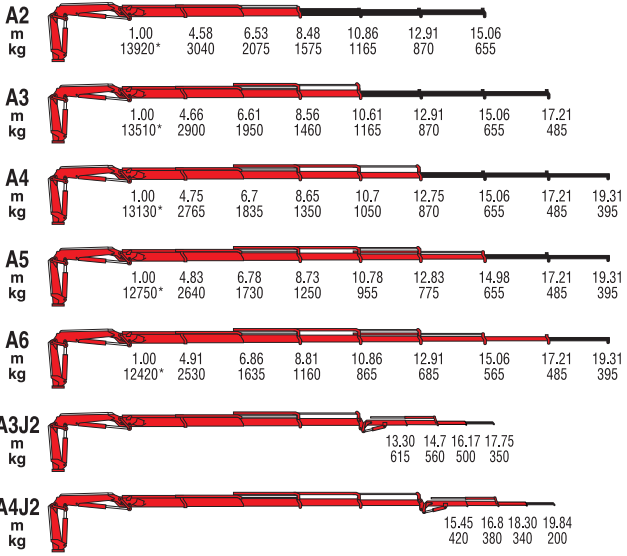




*) Theoretical lifting capacity

MODELS	LIFTING MOMENT	SLEWING ANGLE	WORKING PRESSURE	OIL TANK CAPACITY	MAX OIL FLOW	MAX. VERTICAL REACH (HYDR.)	CRANE WEIGHT (STAB. STANDARD)	DIMENSIONS
	tm	°	bar	l	l/min	m	kg	mm BxhxS
A2	12,4	425	305	130	60	12,2	1820	2450x2330x825
A3	-	425	305	130	60	14,4	1935	2450x2330x825
A4	-	425	305	130	60	16,5	2040	2450x2330x825
A5	-	425	305	130	60	18,7	2140	2450x2330x895
A6	-	425	305	130	60	21,0	2230	2450x2330x895
A3J2	-	425	305	130	60	19,9	2245	2450x2450x940
A4J2	-	425	305	130	60	22,0	2350	2475x2497x940



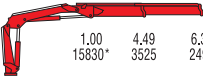
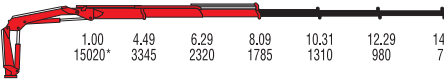
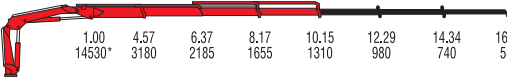
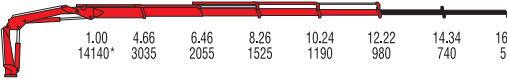
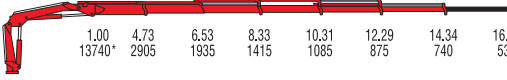


*) Theoretical lifting capacity

MODELS	LIFTING MOMENT	SLEWING ANGLE	WORKING PRESSURE	OIL TANK CAPACITY	MAX OIL FLOW	MAX. VERTICAL REACH (HYDR.)	CRANE WEIGHT (STAB. STANDARD)	DIMENSIONS
	tm	°	bar	l	l/min	m	kg	mm BxhxS
A2	13,9	425	325	130	60	12,2	1820	2450x2330x825
A3	-	425	325	130	60	14,4	1935	2450x2330x825
A4	-	425	325	130	60	16,5	2040	2450x2330x825
A5	-	425	325	130	60	18,7	2140	2450x2330x895
A6	-	425	325	130	60	21,0	2230	2450x2330x895
A3J2	-	425	325	130	60	19,9	2245	2450x2450x940
A4J2	-	425	325	130	60	22,0	2350	2475x2497x940



7160B

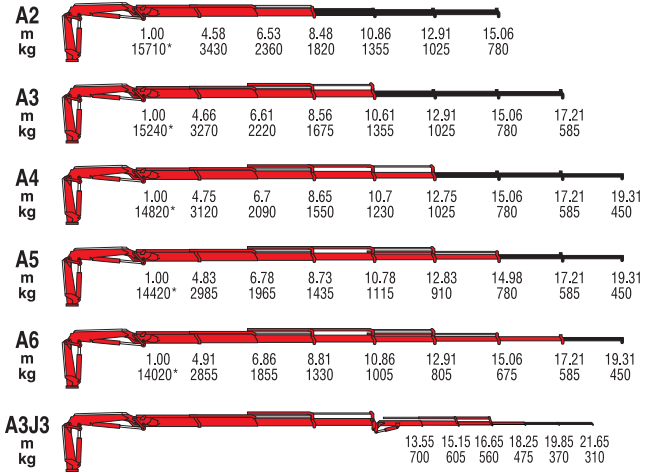
A1									
m		1.00	4.49	6.34					
kg		15830*	3525	2490					
A2									
m		1.00	4.49	6.29	8.09	10.31	12.29	14.34	
kg		15020*	3345	2320	1785	1310	980	740	
A3									
m		1.00	4.57	6.37	8.17	10.15	12.29	14.34	16.44
kg		14530*	3180	2185	1655	1310	980	740	535
A4									
m		1.00	4.66	6.46	8.26	10.24	12.22	14.34	16.44
kg		14140*	3035	2055	1525	1190	980	740	535
A5									
m		1.00	4.73	6.53	8.33	10.31	12.29	14.34	16.44
kg		13740*	2905	1935	1415	1085	875	740	535

*) Theoretical lifting capacity

MODELS	LIFTING MOMENT	SLEWING ANGLE	WORKING PRESSURE	OIL TANK CAPACITY	MAX OIL FLOW	MAX. VERTICAL REACH (HYDR.)	CRANE WEIGHT (STAB. STANDARD)	DIMENSIONS
	tm	°	bar	l	l/min	m	kg	mm BxhxS
A1	15,8	425	280	130	60	9,9	1775	2490x2295x825
A2	-	425	280	130	60	11,7	1910	2490x2295x825
A3	-	425	280	130	60	13,7	2025	2490x2295x825
A4	-	425	280	130	60	15,7	2130	2490x2295x825
A5	-	425	280	130	60	17,8	2220	2490x2295x905







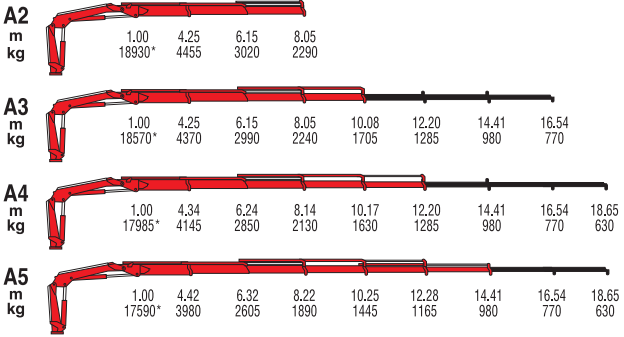
*) Theoretical lifting capacity

MODELS	LIFTING MOMENT	SLEWING ANGLE	WORKING PRESSURE	OIL TANK CAPACITY	MAX OIL FLOW	MAX. VERTICAL REACH (HYDR.)	CRANE WEIGHT (STAB. STANDARD)	DIMENSIONS
	tm	°	bar	l	l/min	m	kg	mm BxhxS
A2	15,7	425	310	130	60	12,2	1995	2475x2330x825
A3	-	425	310	130	60	14,4	2125	2475x2330x825
A4	-	425	310	130	60	16,5	2245	2475x2330x825
A5	-	425	310	130	60	18,7	2355	2475x2330x905
A6	-	425	310	130	60	21,0	2450	2475x2330x905
A3J3	-	425	330	130	60	21,9	2615	2475x2615x957





7210B



*) Theoretical lifting capacity

MODELS	LIFTING MOMENT	SLEWING ANGLE	WORKING PRESSURE	OIL TANK CAPACITY	MAX OIL FLOW	MAX. VERTICAL REACH (HYDR.)	CRANE WEIGHT (STAB. STANDARD)	DIMENSIONS
	tm	°	bar	l	l/min	m	kg	mm BxhxS
A2	18,9	415	315	130	70	11,9	2305	2520x2300x930
A3	-	415	315	130	70	13,9	2455	2520x2300x930
A4	-	415	315	130	70	16,1	2600	2520x2300x930
A5	-	415	315	130	70	18,2	2715	2520x2300x930



7213C

A2				
	1,00	4,30	6,27	8,24
m	19800*	4605	3095	2335
kg				

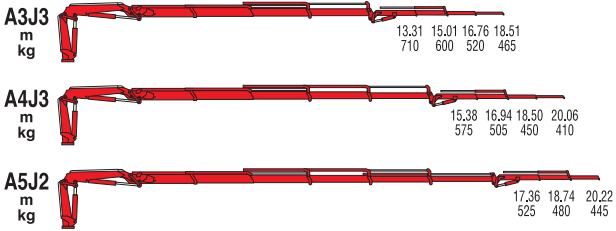
A3								
	1,00	4,30	6,27	8,24	10,31	12,46	14,68	16,96
m	18745*	4360	2860	2130	1675	1115	940	725
kg								

A4									
	1,00	4,38	6,35	8,32	10,39	12,46	14,67	16,96	19,06
m	15155*	4145	2705	1970	1530	1260	940	725	600
kg									

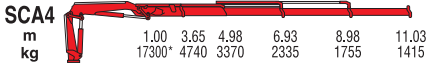
A5									
	1,00	4,46	6,43	8,40	10,47	12,54	14,67	16,96	19,06
m	17570*	3940	2540	1825	1390	1120	945	725	600
kg									

A6									
	1,00	4,55	6,52	8,49	10,56	12,63	14,76	16,96	19,06
m	17220*	3745	2420	1820	1350	1050	845	730	600
kg									

7213C



Short boom

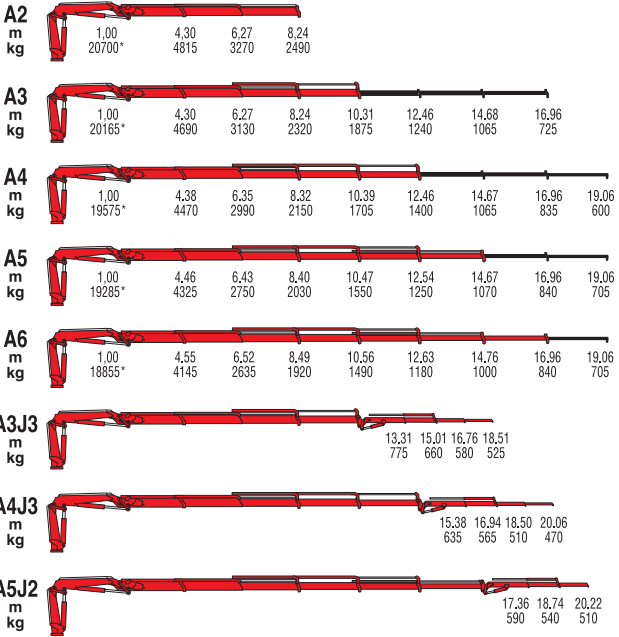


7213SC

*) Theoretical lifting capacity

MODELS	LIFTING MOMENT	SLEWING ANGLE	WORKING PRESSURE	OIL TANK CAPACITY	MAX OIL FLOW	MAX. VERTICAL REACH (HYDR.)	CRANE WEIGHT (STAB. STANDARD)	DIMENSIONS
	tm	°	bar	l	l/min	m	kg	
A2	19,8	415	320	130	70	12,0	2475	2520x2300x930
A3	-	415	310	130	70	14,1	2625	2520x2300x930
A4	-	415	310	130	70	16,2	2775	2520x2300x930
A5	-	415	310	130	70	18,4	2895	2520x2300x930
A6	-	415	310	130	70	20,7	2990	2520x2300x930
A3J3	-	415	-	130	70	22,2	3285	2520x2695x1050
A4J3	-	415	-	130	70	23,8	3265	2520x2600x1050
A5J2	-	415	-	130	70	23,9	3170	2520x2600x1050
SC A2	18,7	415	300	130	70	10,5	2530	2520x2300x870
SC A3	-	415	300	130	70	12,7	2670	2520x2300x870
SC A4	-	415	300	130	70	14,8	2810	2520x2300x870



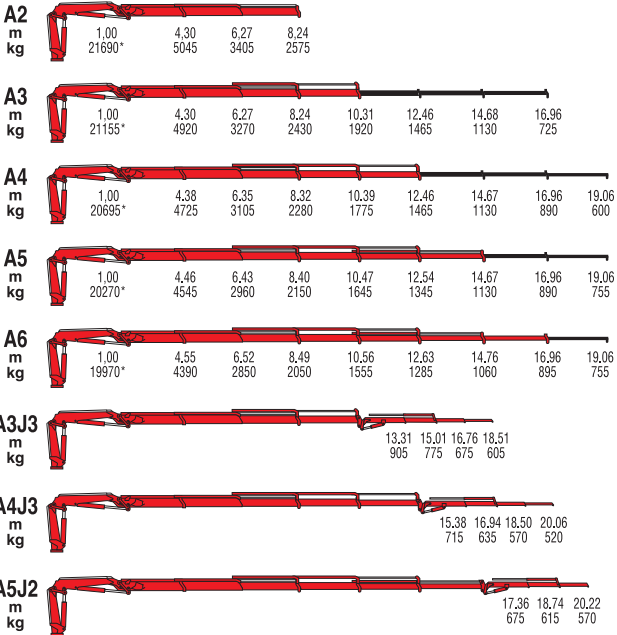


*) Theoretical lifting capacity

MODELS	LIFTING MOMENT	SLEWING ANGLE	WORKING PRESSURE	OIL TANK CAPACITY	MAX OIL FLOW	MAX. VERTICAL REACH (HYDR.)	CRANE WEIGHT (STAB. STANDARD)	DIMENSIONS
	tm	°	bar	l	l/min	m	kg	mm BxhxS
A2	20,7	415	335	130	70	12,0	2475	2520x2300x930
A3	-	415	335	130	70	14,1	2625	2520x2300x930
A4	-	415	335	130	70	16,2	2775	2520x2300x930
A5	-	415	335	130	70	18,4	2895	2520x2300x930
A6	-	415	335	130	70	20,7	2990	2520x2300x930
A3J3	-	415	-	130	70	22,2	3285	2520x2695x1050
A4J3	-	415	-	130	70	23,8	3265	2520x2600x1050
A5J2	-	415	-	130	70	23,9	3170	2520x2550x1050



7231C

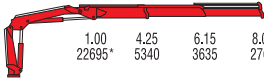
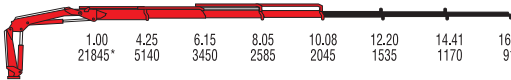
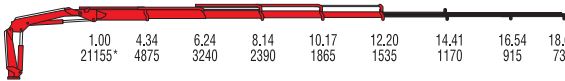
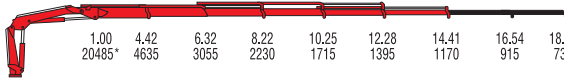


*) Theoretical lifting capacity

MODELS	LIFTING MOMENT	SLEWING ANGLE	WORKING PRESSURE	OIL TANK CAPACITY	MAX OIL FLOW	MAX. VERTICAL REACH (HYDR.)	CRANE WEIGHT (STAB. STANDARD)	DIMENSIONS
	tm	°	bar	l	l/min	m	kg	mm BxhxS
A2	21,7	415	345	130	70	12,0	2475	2520x2300x930
A3	-	415	345	130	70	14,1	2625	2520x2300x930
A4	-	415	345	130	70	16,2	2775	2520x2300x930
A5	-	415	345	130	70	18,4	2895	2520x2300x930
A6	-	415	345	130	70	20,7	2990	2520x2300x930
A3J3	-	415	-	130	70	22,2	3285	2520x2695x1050
A4J3	-	415	-	130	70	23,8	3265	2520x2600x1050
A5J2	-	415	-	130	70	23,9	3170	2520x2550x1050



7240B

A2										
m		1.00	4.25	6.15	8.05					
kg		22695*	5340	3635	2765					
A3										
m		1.00	4.25	6.15	8.05	10.08	12.20	14.41	16.54	
kg		21845*	5140	3450	2585	2045	1535	1170	915	
A4										
m		1.00	4.34	6.24	8.14	10.17	12.20	14.41	16.54	18.65
kg		21155*	4875	3240	2390	1865	1535	1170	915	730
A5										
m		1.00	4.42	6.32	8.22	10.25	12.28	14.41	16.54	18.65
kg		20485*	4635	3055	2230	1715	1395	1170	915	730

*) Theoretical lifting capacity

MODELS	LIFTING MOMENT	SLEWING ANGLE	WORKING PRESSURE	OIL TANK CAPACITY	MAX OIL FLOW	MAX. VERTICAL REACH (HYDR.)	CRANE WEIGHT (STAB. STANDARD)	DIMENSIONS
	tm	°	bar	l	l/min	m	kg	mm BxhxS
A2	22,7	415	320	130	80	11,9	2485	2520x2300x930
A3	-	415	320	130	80	13,9	2640	2520x2300x930
A4	-	415	320	130	80	16,0	2790	2520x2300x930
A5	-	415	320	130	80	18,2	2910	2520x2300x930



7243C

A2

m	1,00	4,23	6,16	8,03
kg	22520*	5325	3620	2745

A3

m	1,00	4,23	6,13	8,03	10,06	12,17	14,39	16,60
kg	22140*	5235	3520	2640	2090	1600	1240	1000

A4

m	1,00	4,31	6,21	8,28	10,14	12,17	14,39	16,60	18,85
kg	21290*	4940	3295	2435	1900	1540	1240	1000	750

A5

m	1,00	4,39	6,29	8,19	10,22	12,25	14,38	16,60	18,85	21,13
kg	20455*	4660	3075	2245	1725	1405	1180	1000	750	570

A6

m	1,00	4,48	6,38	8,28	10,31	12,34	14,47	16,60	18,85	21,13
kg	20045*	4475	2930	2115	1600	1280	1055	905	750	570

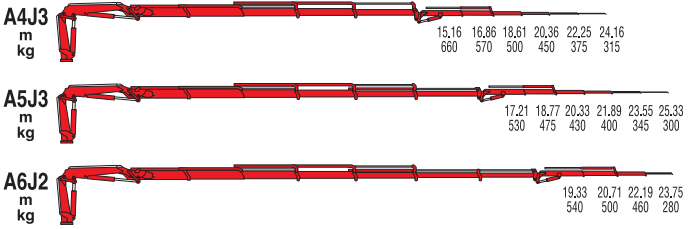
A7

m	1,00	4,56	6,46	8,36	10,39	12,42	14,55	16,68	18,85	21,13	23,23
kg	19675*	4315	2800	1995	1485	1160	940	795	695	570	450

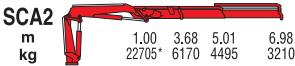
A8

m	1,00	4,65	6,55	8,45	10,48	12,51	14,64	16,77	18,93	21,13	23,23
kg	19390*	4170	2690	1900	1395	1070	850	705	605	535	450

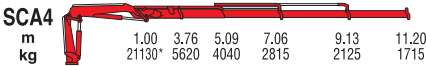
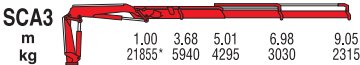
7243C



Short boom



7243SC



*) Theoretical lifting capacity

MODELS	LIFTING MOMENT	SLEWING ANGLE	WORKING PRESSURE	OIL TANK CAPACITY	MAX OIL FLOW	MAX. VERTICAL REACH (HYDR.)	CRANE WEIGHT (STAB. STANDARD)	DIMENSIONS
	tm	°	bar	l	l/min	m	kg	
A2	22,5	415	315	130	80	11,7	2600	2520x2300x935
A3	-	415	310	130	80	13,8	2740	2520x2300x935
A4	-	415	310	130	80	15,9	2880	2520x2300x935
A5	-	415	310	130	80	18,1	3005	2520x2300x935
A6	-	415	310	130	80	20,3	3110	2520x2300x935
A7	-	415	310	130	80	22,5	3230	2520x2300x1005
A6	-	415	310	130	80	24,8	3320	2520x2300x1005
A4J3	-	415	325	130	80	24,1	3540	2520x2715x1055
A5J3	-	415	330	130	80	25,6	3495	2520x2615x1055
A6J2	-	415	325	130	80	25,9	3385	2520x2605x1055
SC A2	22,7	415	320	130	80	10,7	2530	2520x2300x930
SC A3	-	415	320	130	80	12,8	2670	2520x2300x930
SC A4	-	415	320	130	80	14,9	2810	2520x2300x930



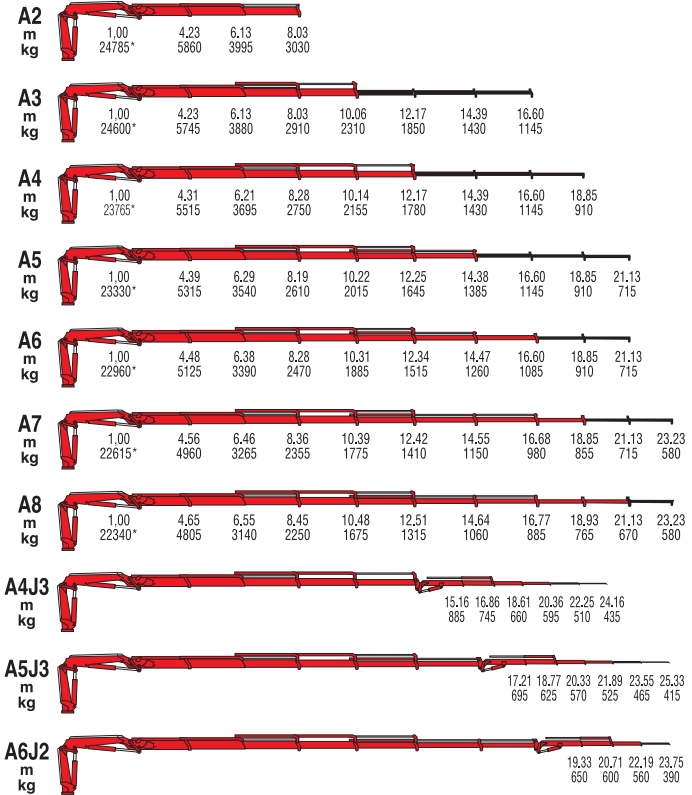


A2		1,00	4,23	6,13	8,03								
m													
kg		23510*	5495	3800	2925								
A3		1,00	4,23	6,13	8,03	10,06	12,17	14,39	16,60				
m													
kg		22855*	5400	3690	2810	2265	1770	1390	1035				
A4		1,00	4,31	6,21	8,28	10,14	12,17	14,39	16,60	18,85			
m													
kg		21995*	5100	3455	2600	2065	1730	1390	1035	870			
A5		1,00	4,39	6,29	8,19	10,22	12,25	14,38	16,60	18,85	21,13		
m													
kg		21115*	4815	3235	2395	1875	1550	1320	1035	870	670		
A6		1,00	4,48	6,38	8,28	10,31	12,34	14,47	16,60	18,85	21,13		
m													
kg		20770*	4635	3080	2260	1735	1410	1180	1035	870	670		
A7		1,00	4,56	6,46	8,36	10,39	12,42	14,55	16,68	18,85	21,13	23,23	
m													
kg		20350*	4460	2940	2130	1615	1285	1050	905	805	670	540	
A8		1,00	4,65	6,55	8,45	10,48	12,51	14,64	16,77	18,93	21,13	23,23	
m													
kg		20115*	4325	2830	2030	1515	1185	960	805	700	630	540	
A4J3								15,16	16,86	18,61	20,36	22,25	24,16
m													
kg								730	640	565	515	435	370
A5J3								17,21	18,77	20,33	21,89	23,55	25,33
m													
kg								600	540	495	465	405	355
A6J2								19,33	20,71	22,19	23,75		
m													
kg								570	530	490	330		

*) Theoretical lifting capacity

MODELS	LIFTING MOMENT	SLEWING ANGLE	WORKING PRESSURE	OIL TANK CAPACITY	MAX OIL FLOW	MAX. VERTICAL REACH (HYDR.)	CRANE WEIGHT (STAB. STANDARD)	DIMENSIONS
	tm	°	bar	l	l/min	m	kg	mm BxhxS
A2	23,2	415	330	130	80	11,7	2600	2520x2300x935
A3	-	415	330	130	80	13,8	2740	2520x2300x935
A4	-	415	330	130	80	15,9	2880	2520x2300x935
A5	-	415	330	130	80	18,1	3005	2520x2300x935
A6	-	415	330	130	80	20,3	3110	2520x2300x935
A7	-	415	330	130	80	22,5	3230	2520x2300x1005
A8	-	415	330	130	80	24,8	3320	2520x2300x1005
A4J3	-	415	335	130	80	24,1	3540	2520x2715x1055
A5J3	-	415	335	130	80	25,6	3495	2520x2615x1055
A6J2	-	415	330	130	80	25,9	3385	2520x2605x1055





*) Theoretical lifting capacity

MODELS	LIFTING MOMENT	SLEWING ANGLE	WORKING PRESSURE	OIL TANK CAPACITY	MAX OIL FLOW	MAX. VERTICAL REACH (HYDR.)	CRANE WEIGHT (STAB. STANDARD)	DIMENSIONS
	tm	°	bar	l	l/min	m	kg	mm BxhxS
A2	24,8	415	345	130	80	11,7	2600	2520x2300x935
A3	-	415	345	130	80	13,8	2740	2520x2300x935
A4	-	415	345	130	80	15,9	2880	2520x2300x935
A5	-	415	345	130	80	18,1	3005	2520x2300x935
A6	-	415	345	130	80	20,3	3110	2520x2300x935
A7	-	415	345	130	80	22,5	3230	2520x2300x1005
A8	-	415	345	130	80	24,8	3320	2520x2300x1005
A4J3	-	415	355	130	80	24,1	3540	2520x2715x1055
A5J3	-	415	350	130	80	25,6	3495	2520x2615x1055
A6J2	-	415	350	130	80	25,9	3385	2520x2605x1055



700 Series

***Articulated with
double linkage***

729

732

732SC

736R

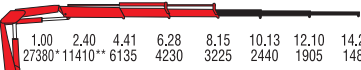
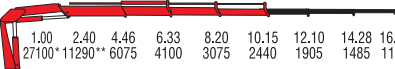
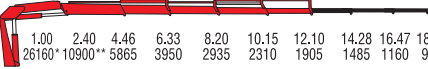
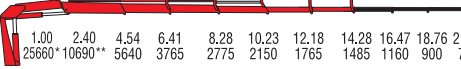
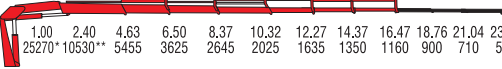
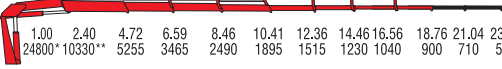
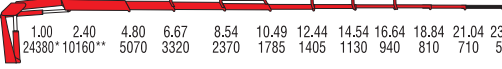

736RSC

745

746R

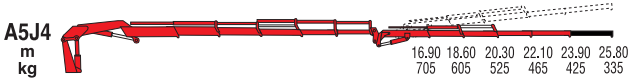
749R



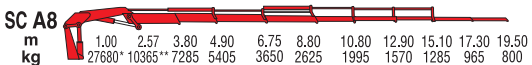
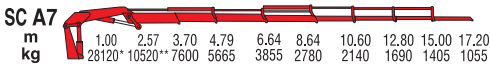
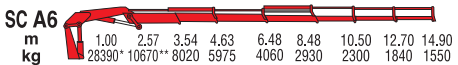
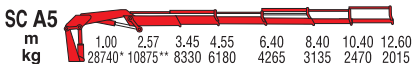
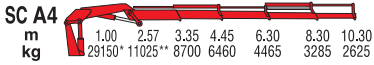
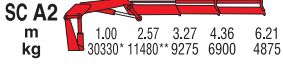
A2	
m	1.00 2.40 4.41 6.28 8.15 10.13 12.10 14.28
kg	27380* 11410** 6135 4230 3225 2440 1905 1485
A3	
m	1.00 2.40 4.46 6.33 8.20 10.15 12.10 14.28 16.47
kg	27100* 11290** 6075 4100 3075 2440 1905 1485 1160
A4	
m	1.00 2.40 4.46 6.33 8.20 10.15 12.10 14.28 16.47 18.76
kg	26160* 10900** 5865 3950 2935 2310 1905 1485 1160 900
A5	
m	1.00 2.40 4.54 6.41 8.28 10.23 12.18 14.28 16.47 18.76 21.04
kg	25660* 10690** 5640 3765 2775 2150 1765 1485 1160 900 710
A6	
m	1.00 2.40 4.63 6.50 8.37 10.32 12.27 14.37 16.47 18.76 21.04 23.23
kg	25270* 10530** 5455 3625 2645 2025 1635 1350 1160 900 710 570
A7	
m	1.00 2.40 4.72 6.59 8.46 10.41 12.36 14.46 16.56 18.76 21.04 23.23
kg	24800* 10330** 5255 3465 2490 1895 1515 1230 1040 900 710 570
A8	
m	1.00 2.40 4.80 6.67 8.54 10.49 12.44 14.54 16.64 18.84 21.04 23.23
kg	24380* 10160** 5070 3320 2370 1785 1405 1130 940 810 710 570
A6J4	
m	19.55 21.15 22.70 24.09 25.69 27.50
kg	480 425 380 350 320 250

*) Theoretical lifting capacity
 **) Capacity at fixed hook (only if with load limiting device in EC area)

MODELS	LIFTING MOMENT	SLEWING ANGLE	WORKING PRESSURE	OIL TANK CAPACITY	MAX OIL FLOW	MAX. VERTICAL REACH (HYDR.)	CRANE WEIGHT (STAB. STANDARD)	DIMENSIONS
	tm	°	bar	l	l/min	m	kg	mm BxhxS
A2	27,4	400	325	180	50	11,90	3205	2500x2365x1015
A3	-	400	325	180	50	13,85	3365	2500x2365x1015
A4	-	400	325	180	50	15,80	3520	2500x2365x1015
A5	-	400	325	180	50	17,95	3660	2500x2365x1045
A6	-	400	325	180	50	20,10	3785	2500x2365x1065
A7	-	400	325	180	50	22,40	3900	2500x2365x1165
A8	-	400	325	180	50	24,70	4000	2500x2365x1185
A6J4	-	400	325	180	50	29,10	4360	2500x2720x1195



Short boom



732SC R

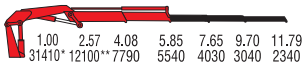


*) Theoretical lifting capacity
 **) Capacity at fixed hook (only if with load limiting device in EC area)

MODELS	LIFTING MOMENT	SLEWING ANGLE	WORKING PRESSURE	OIL TANK CAPACITY	MAX OIL FLOW	MAX. VERTICAL REACH (HYDR.)	CRANE WEIGHT (STAB. STANDARD)	DIMENSIONS
	tm	°	bar	l	l/min	m	kg	
A1	31,2	397	300	160	45	9,90	3590	2500x2355x1170
A2	-	397	300	160	45	11,80	3820	2500x2355x1170
A3	-	397	300	160	45	13,80	4040	2500x2355x1170
A4	-	397	300	160	45	15,80	4270	2500x2355x1170
A5	-	397	300	160	45	18,10	4440	2500x2355x1170
A6	-	397	300	160	45	20,40	4600	2500x2405x1170
A7	-	397	300	160	45	22,70	4720	2500x2490x1220
A8	-	397	300	160	45	25,00	4840	2530x2550x1300
A4J4	-	397	290	160	45	25,70	5110	2540x2620x1330
A5J4	-	397	290	160	45	28,00	5280	2545x2620x1330
SC A2	30,3	397	300	160	45	10,20	3750	2540x2355x1170
SC A3	-	397	300	160	45	12,30	3970	2540x2355x1170
SC A4	-	397	300	160	45	14,40	4200	2540x2355x1170
SC A5	-	397	300	160	45	16,70	4370	2540x2355x1170
SC A6	-	397	300	160	45	18,90	4530	2540x2405x1170
SC A7	-	397	300	160	45	21,30	4650	2540x2490x1220
SC A8	-	397	300	160	45	23,60	4770	2530x2550x1300



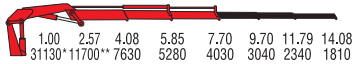
A1
m
kg



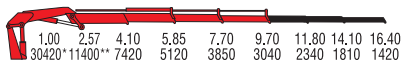
736R



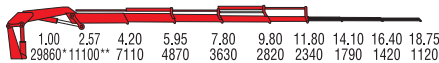
A2
m
kg



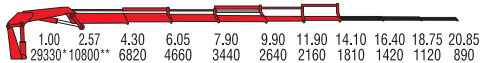
A3
m
kg



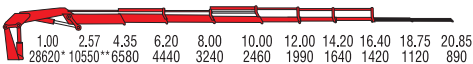
A4
m
kg



A5
m
kg



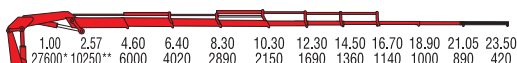
A6
m
kg



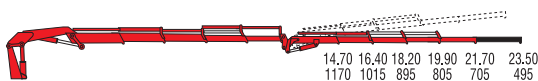
A7
m
kg



A8
m
kg



A4J4
m
kg



736R



RADIOCONTROL

A5J4
m
kg



Short boom

SC A2
m
kg

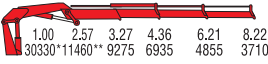


736SC R

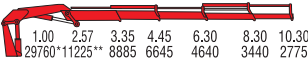


RADIOCONTROL

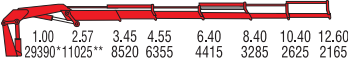
SC A3
m
kg



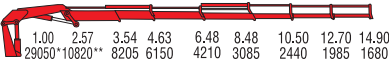
SC A4
m
kg



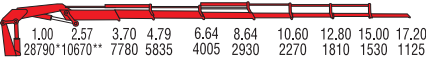
SC A5
m
kg



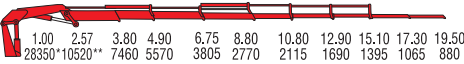
SC A6
m
kg



SC A7
m
kg



SC A8
m
kg








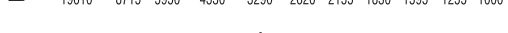


*) Theoretical lifting capacity

***) Capacity at fixed hook (only if with load limiting device in EC area)

MODELS	LIFTING MOMENT	SWAYING ANGLE	WORKING PRESSURE	OIL TANK CAPACITY	MAX OIL FLOW	MAX. VERTICAL REACH (HYDR.)	CRANE WEIGHT (STAB. STANDARD)	DIMENSIONS
	tm	°	bar	l	l/min	m	kg	mm BxhxS
A1	32,4	397	310	160	45	9,90	3590	2500x2355x1170
A2	-	397	310	160	45	11,80	3820	2500x2355x1170
A3	-	397	310	160	45	13,80	4040	2500x2355x1170
A4	-	397	310	160	45	15,80	4270	2500x2355x1170
A5	-	397	310	160	45	18,10	4440	2500x2355x1170
A6	-	397	310	160	45	20,40	4600	2500x2405x1170
A7	-	397	310	160	45	22,70	4720	2500x2490x1220
A8	-	397	310	160	45	25,00	4840	2530x2550x1300
A4J4	-	397	300	160	45	25,70	5110	2540x2620x1330
A5J4	-	397	300	160	45	28,00	5280	2545x2620x1330
SC A2	31,4	397	310	160	45	10,20	3750	2540x2355x1170
SC A3	-	397	310	160	45	12,30	3970	2540x2355x1170
SC A4	-	397	310	160	45	14,40	4200	2540x2355x1170
SC A5	-	397	310	160	45	16,70	4370	2540x2355x1170
SC A6	-	397	310	160	45	18,90	4530	2540x2405x1170
SC A7	-	397	310	160	45	21,30	4650	2540x2490x1220
SC A8	-	397	310	160	45	23,60	4770	2530x2550x1300



A1																			
m		2.00	4.22	6.00															
kg		22560*	10490	7520															
A2																			
m		2.00	4.22	6.00	7.85														
kg		21710*	10235	7235	5515														
A3																			
m		2.00	4.33	6.10	7.95	9.90	11.90	14.00	16.10										
kg		21170*	9780	6910	5245	4180	3245	2545	2025										
A4																			
m		2.00	4.45	6.20	8.05	10.00	11.90	14.00	16.10	18.30									
kg		20880*	9385	6600	4960	3915	3245	2545	2025	1595									
A5																			
m		2.00	4.45	6.20	8.05	10.00	11.90	14.00	16.10	18.30	20.50								
kg		20470*	9200	6400	4735	3685	3015	2545	2025	1595	1255								
A6																			
m		2.00	4.50	6.25	8.10	10.00	12.00	14.00	16.10	18.30	20.50	22.70							
kg		20000*	8890	6145	4525	3480	2820	2345	2025	1595	1255	1000							
A7																			
m		2.00	4.50	6.25	8.10	10.00	12.00	14.00	16.10	18.30	20.50	22.70							
kg		19610*	8715	5950	4330	3290	2620	2155	1830	1595	1255	1000							
A8																			
m		2.00	4.60	6.30	8.20	10.10	12.10	14.10	16.20	18.30	20.50	22.70							
kg		19260*	8375	5705	4125	3110	2440	1960	1650	1415	1255	1000							

*) Theoretical lifting capacity

MODELS	LIFTING MOMENT	SLEWING ANGLE	WORKING PRESSURE	OIL TANK CAPACITY	MAX OIL FLOW	MAX. VERTICAL REACH (HYDR.)	CRANE WEIGHT (STAB. STANDARD)	DIMENSIONS
	tm	°	bar	l	l/min	m	kg	mm BxhxS
A1	45,1	400	300	210	50	10,20	4280	2505x2460x1250
A2	-	400	300	210	50	12,00	4540	2505x2460x1275
A3	-	400	300	210	50	14,10	4790	2505x2460x1275
A4	-	400	300	210	50	16,10	5070	2505x2460x1275
A5	-	400	300	210	50	18,20	5310	2505x2460x1285
A6	-	400	300	210	50	20,30	5510	2505x2460x1285
A7	-	400	300	210	50	22,50	5700	2505x2460x1400
A8	-	400	300	210	50	24,70	5880	2510x2480x1400





A2		2.00	4.22	6.00	7.85													
m		21710*	10235	7235	5515													
kg																		
A3		2.00	4.33	6.10	7.95	9.90	11.90	14.00	16.10									
m		21170*	9780	6910	5245	4180	3245	2545	2025									
kg																		
A4		2.00	4.45	6.20	8.05	10.00	11.90	14.00	16.10	18.30								
m		20880*	9385	6600	4960	3915	3245	2545	2025	1595								
kg																		
A5		2.00	4.45	6.20	8.05	10.00	11.90	14.00	16.10	18.30	20.50							
m		20470*	9200	6400	4735	3685	3015	2545	2025	1595	1255							
kg																		
A6		2.00	4.50	6.25	8.10	10.00	12.00	14.00	16.10	18.30	20.50	22.70						
m		20000*	8890	6145	4525	3480	2820	2345	2025	1595	1255	1000						
kg																		
A7		2.00	4.50	6.25	8.10	10.00	12.00	14.00	16.10	18.30	20.50	22.70						
m		19610*	8715	5950	4330	3290	2620	2155	1830	1595	1255	1000						
kg																		
A8		2.00	4.60	6.30	8.20	10.10	12.10	14.10	16.20	18.30	20.50	22.70						
m		19260*	8375	5705	4125	3110	2440	1960	1650	1415	1255	1000						
kg																		
A6J4													18,90	20,60	22,30	24,10	25,90	27,80
m													880	770	680	620	570	450
kg																		

*) Theoretical lifting capacity

MODELS	LIFTING MOMENT	SLEWING ANGLE	WORKING PRESSURE	OIL TANK CAPACITY	MAX OIL FLOW	MAX. VERTICAL REACH (HYDR.)	CRANE WEIGHT (STAB. STANDARD)	DIMENSIONS
	tm	°	bar	l	l/min	m	kg	mm BxhxS
A2	43,4	400	300	210	80	12,00	4540	2505x2460x1275
A3	-	400	300	210	80	14,10	4790	2505x2460x1275
A4	-	400	300	210	80	16,10	5070	2505x2460x1275
A5	-	400	300	210	80	18,20	5310	2505x2460x1285
A6	-	400	300	210	80	20,30	5510	2505x2460x1285
A7	-	400	300	210	80	22,50	5700	2505x2460x1400
A8	-	400	300	210	80	24,70	5880	2510x2480x1400
A6J4	-	400	300	210	80	30,10	6380	2515x2725x1470





A2		2.00	4.22	6.00	7.85														
m																			
kg		22370*	10450	7420	5700														
A3		2.00	4.33	6.10	8.00	9.90	11.90	14.00	16.10										
m																			
kg		21680*	9880	7100	5420	4370	3430	2720	2180										
A4		2.00	4.45	6.20	8.05	10.00	11.90	14.00	16.10	18.30									
m																			
kg		21180*	9520	6800	5150	4105	3430	2720	2180	1740									
A5		2.00	4.45	6.20	8.05	10.00	11.90	14.00	16.10	18.30	20.50								
m																			
kg		20740*	9320	6570	4920	3870	3180	2720	2180	1740	1380								
A6		2.00	4.50	6.25	8.10	10.00	12.00	14.00	16.10	18.30	20.50	22.70							
m																			
kg		20430*	9080	6340	4700	3660	2990	2505	2180	1740	1380	1060							
A7		2.00	4.50	6.25	8.10	10.00	12.00	14.00	16.10	18.30	20.50	22.70							
m																			
kg		20150*	8900	6120	4500	3450	2780	2300	1980	1740	1380	1060							
A8		2.00	4.60	6.30	8.20	10.10	12.10	14.10	16.20	18.30	20.50	22.70							
m																			
kg		19800*	8560	5890	4300	3270	2580	2105	1790	1550	1380	1060							
A6J4													18.90	20.60	22.30	24.10	25.90	27.80	
m																			
kg													985	860	770	708	655	485	

*) Theoretical lifting capacity

MODELS	LIFTING MOMENT	SLEWING ANGLE	WORKING PRESSURE	OIL TANK CAPACITY	MAX OIL FLOW	MAX. VERTICAL REACH (HYDR.)	CRANE WEIGHT (STAB. STANDARD)	DIMENSIONS
	tm	°	bar	l	l/min	m	kg	
A2	44,7	400	320	210	80	12,00	4580	2505x2460x1275
A3	-	400	320	210	80	14,10	4830	2505x2460x1275
A4	-	400	320	210	80	16,10	5110	2505x2460x1275
A5	-	400	320	210	80	18,20	5350	2505x2460x1285
A6	-	400	320	210	80	20,30	5550	2505x2460x1285
A7	-	400	320	210	80	22,50	5740	2505x2460x1400
A8	-	400	320	210	80	24,70	5920	2510x2480x1400
A6J4	-	400	320	210	80	30,10	6420	2515x2725x1470



8 **Series**

Basic articulated
NO CE

108

128

148

178

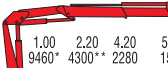
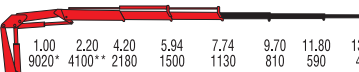
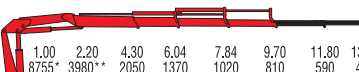
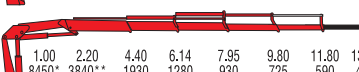
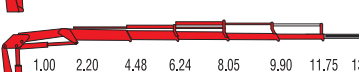
238

248

258

268



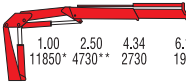

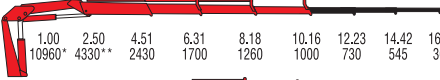



A1		1.00	2.20	4.20	5.94			
m		9460*	4300**	2280	1590			
kg								
A2		1.00	2.20	4.20	5.94	7.74	9.70	11.80
m		9020*	4100**	2180	1500	1130	810	590
kg								435
A3		1.00	2.20	4.30	6.04	7.84	9.70	11.80
m		8755*	3980**	2050	1370	1020	810	590
kg								435
A4		1.00	2.20	4.40	6.14	7.95	9.80	11.80
m		8450*	3840**	1930	1280	930	725	590
kg								435
A5		1.00	2.20	4.48	6.24	8.05	9.90	11.75
m		8140*	3700**	1820	1190	850	645	520
kg								435

*) Theoretical lifting capacity

***) Capacity at fixed hook (only if with load limiting device in EC area)

MODELS	LIFTING MOMENT	SLEWING ANGLE	WORKING PRESSURE	OIL TANK CAPACITY	MAX OIL FLOW	MAX. VERTICAL REACH (HYDR.)	CRANE WEIGHT (STAB. STANDARD)	DIMENSIONS
	tm	°	bar	l	l/min	m	kg	mm BxhxS
A1	9,46	395	290	60	25	9,45	1230	2480x2170x640
A2	-	395	290	60	25	11,30	1335	2480x2170x640
A3	-	395	290	60	25	13,20	1430	2480x2170x640
A4	-	395	290	60	25	15,30	1520	2480x2170x640
A5	-	395	290	60	25	17,30	1590	2480x2170x750



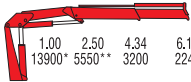

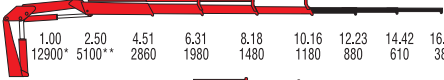



A1 m kg		1.00 11850*	2.50 4730**	4.34 2730	6.14 1910								
A2 m kg		1.00 11270*	2.50 4470**	4.42 2550	6.23 1800	8.10 1360	10.16 1000	12.23 730	14.42 545				
A3 m kg		1.00 10960*	2.50 4330**	4.51 2430	6.31 1700	8.18 1260	10.16 1000	12.23 730	14.42 545	16.54 300			
A4 m kg		1.00 10670*	2.50 4210**	4.60 2320	6.40 1580	8.27 1160	10.25 890	12.23 730	14.42 545	16.54 300			
A5 m kg		1.00 10530*	2.50 4150**	4.68 2250	6.48 1535	8.35 1110	10.33 835	12.31 665	14.31 545	16.54 300			
A3J2 m kg										12.85 450	14.22 395	15.70 350	17.30 280

*) Theoretical lifting capacity

**) Capacity at fixed hook (only if with load limiting device in EC area)

MODELS	LIFTING MOMENT	SLEWING ANGLE	WORKING PRESSURE	OIL TANK CAPACITY	MAX OIL FLOW	MAX. VERTICAL REACH (HYDR.)	CRANE WEIGHT (STAB. STANDARD)	DIMENSIONS
	tm	°	bar	l	l/min	m	kg	mm BxhxS
A1	11,9	380	310	100	25	9,6	1545	2460x2340x855
A2	-	380	310	100	25	11,5	1665	2460x2340x855
A3	-	380	310	100	25	13,5	1770	2460x2340x855
A4	-	380	310	100	25	15,5	1865	2485x2340x855
A5	-	380	310	100	25	17,6	1955	2500x2340x940
A3J2	-	380	290	100	25	18,8	2080	2490x2340x1030



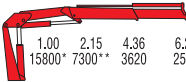
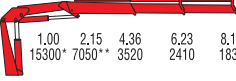
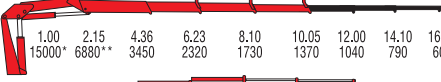

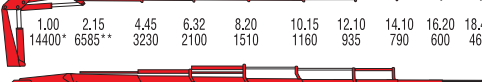
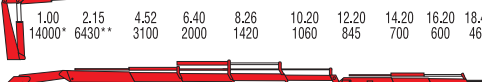

A1 m kg		1.00 13900*	2.50 5550**	4.34 3200	6.14 2240								
A2 m kg		1.00 13300*	2.50 5300**	4.42 3000	6.23 2100	8.10 1600	10.16 1180	12.23 880	14.42 610				
A3 m kg		1.00 12900*	2.50 5100**	4.51 2860	6.31 1980	8.18 1480	10.16 1180	12.23 880	14.42 610	16.54 380			
A4 m kg		1.00 12700*	2.50 5000**	4.60 2760	6.40 1870	8.27 1370	10.25 1065	12.23 880	14.42 610	16.54 380			
A5 m kg		1.00 12400*	2.50 4900**	4.68 2650	6.48 1780	8.35 1280	10.33 990	12.31 800	14.31 610	16.54 380			
A3J2 m kg										12.85 550	14.22 485	15.70 430	17.30 360

*) Theoretical lifting capacity

**) Capacity at fixed hook (only if with load limiting device in EC area)

MODELS	LIFTING MOMENT	SLEWING ANGLE	WORKING PRESSURE	OIL TANK CAPACITY	MAX OIL FLOW	MAX. VERTICAL REACH (HYDR.)	CRANE WEIGHT (STAB. STANDARD)	DIMENSIONS
	tm	°	bar	l	l/min	m	kg	mm BxhxS
A1	13,9	380	290	100	25	9,6	1680	2460x2340x855
A2	-	380	290	100	25	11,5	1810	2460x2340x855
A3	-	380	290	100	25	13,5	1930	2460x2340x855
A4	-	380	290	100	25	15,5	2030	2485x2340x855
A5	-	380	290	100	25	17,6	2120	2500x2340x940
A3J2	-	380	290	100	25	18,8	2240	2490x2340x1030



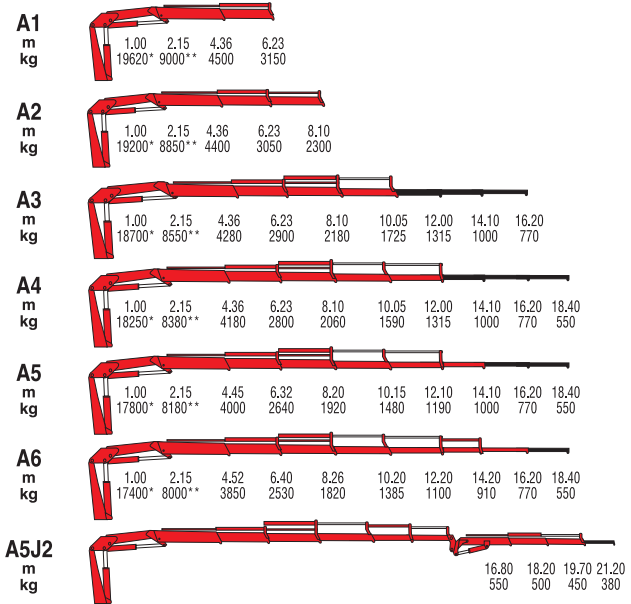
A1		1.00 15800*	2.15 7300**	4.36 3620	6.23 2520							
A2		1.00 15300*	2.15 7050**	4.36 3520	6.23 2410	8.10 1830						
A3		1.00 15000*	2.15 6880**	4.36 3450	6.23 2320	8.10 1730	10.05 1370	12.00 1040	14.10 790	16.20 600		
A4		1.00 14700*	2.15 6740**	4.36 3370	6.23 2220	8.10 1620	10.05 1260	12.00 1040	14.10 790	16.20 600	18.40 460	
A5		1.00 14400*	2.15 6585**	4.45 3230	6.32 2100	8.20 1510	10.15 1160	12.10 935	14.10 790	16.20 600	18.40 460	
A6		1.00 14000*	2.15 6430**	4.52 3100	6.40 2000	8.26 1420	10.20 1060	12.20 845	14.20 700	16.20 600	18.40 460	
A4J2									14.70 535	16.20 480	17.60 435	19.20 360

*) Theoretical lifting capacity

**) Capacity at fixed hook (only if with load limiting device in EC area)

MODELS	LIFTING MOMENT	SLEWING ANGLE	WORKING PRESSURE	OIL TANK CAPACITY	MAX OIL FLOW	MAX. VERTICAL REACH (HYDR.)	CRANE WEIGHT (STAB. STANDARD)	DIMENSIONS
	tm	°	bar	l	l/min	m	kg	mm BxhxS
A1	15,8	387	310	130	32	9,9	2130	2480x2295x970
A2	-	387	310	130	32	11,8	2270	2480x2295x970
A3	-	387	310	130	32	13,8	2390	2480x2295x1000
A4	-	387	310	130	32	15,7	2510	2485x2295x1000
A5	-	387	310	130	32	17,8	2620	2480x2295x1000
A6	-	387	310	130	32	19,8	2700	2495x2295x1000
A4J2	-	387	310	130	32	21,1	2820	2480x2295x1030

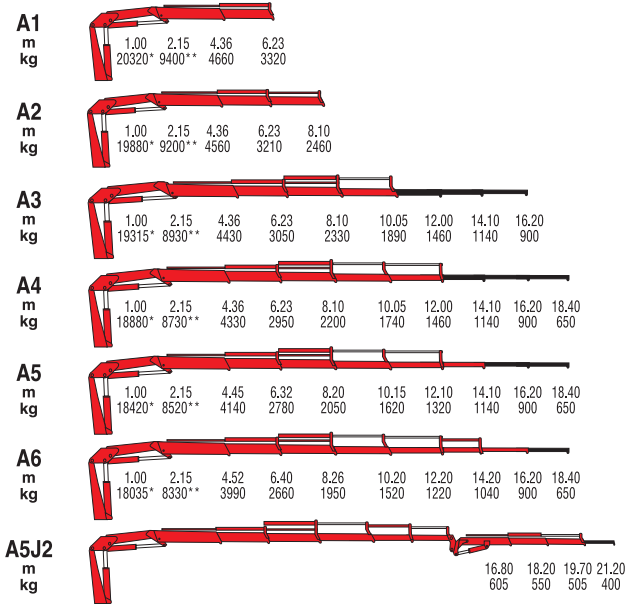




*) Theoretical lifting capacity
 **) Capacity at fixed hook (only if with load limiting device in EC area)

MODELS	LIFTING MOMENT	SLEWING ANGLE	WORKING PRESSURE	OIL TANK CAPACITY	MAX OIL FLOW	MAX. VERTICAL REACH (HYDR.)	CRANE WEIGHT (STAB. STANDARD)	DIMENSIONS
	tm	°	bar	l	l/min	m	kg	mm BxhxS
A1	19,6	387	300	130	40	9,9	2280	2480x2295x970
A2	-	387	300	130	40	11,8	2430	2480x2295x970
A3	-	387	300	130	40	13,8	2570	2480x2295x1000
A4	-	387	300	130	40	15,7	2700	2485x2295x1000
A5	-	387	300	130	40	17,8	2800	2480x2295x1000
A6	-	387	300	130	40	19,8	2900	2495x2295x1000
A5J2	-	387	300	130	40	23,3	3135	2480x2295x1120

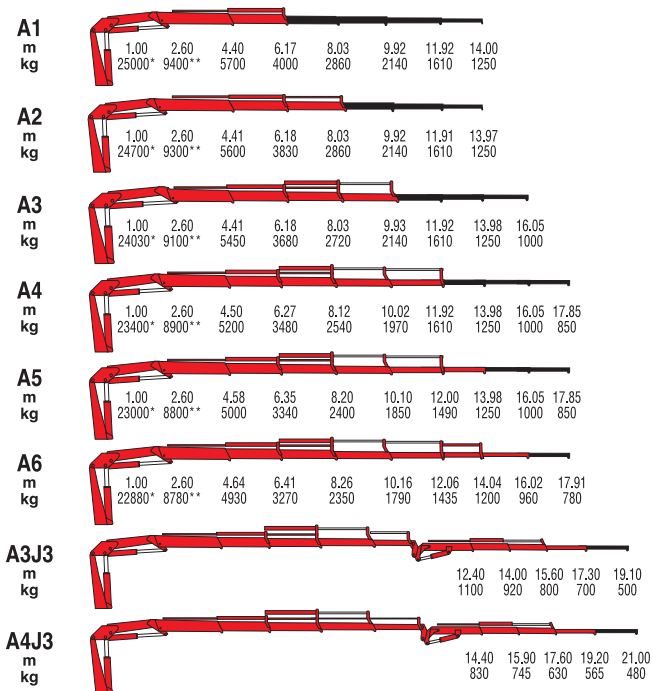




*) Theoretical lifting capacity
 **) Capacity at fixed hook (only if with load limiting device in EC area)

MODELS	LIFTING MOMENT	SLEWING ANGLE	WORKING PRESSURE	OIL TANK CAPACITY	MAX OIL FLOW	MAX. VERTICAL REACH (HYDR.)	CRANE WEIGHT (STAB. STANDARD)	DIMENSIONS
	tm	°	bar	l	l/min	m	kg	mm BxhxS
A1	20,3	387	315	130	40	9,9	2310	2480x2295x970
A2	-	387	315	130	40	11,8	2460	2480x2295x970
A3	-	387	315	130	40	13,8	2600	2480x2295x1000
A4	-	387	315	130	40	15,7	2730	2480x2295x1000
A5	-	387	315	130	40	17,8	2830	2480x2295x1000
A6	-	387	315	130	40	19,8	2930	2495x2295x1000
A5J2	-	387	315	130	40	23,3	3165	2480x2295x1120

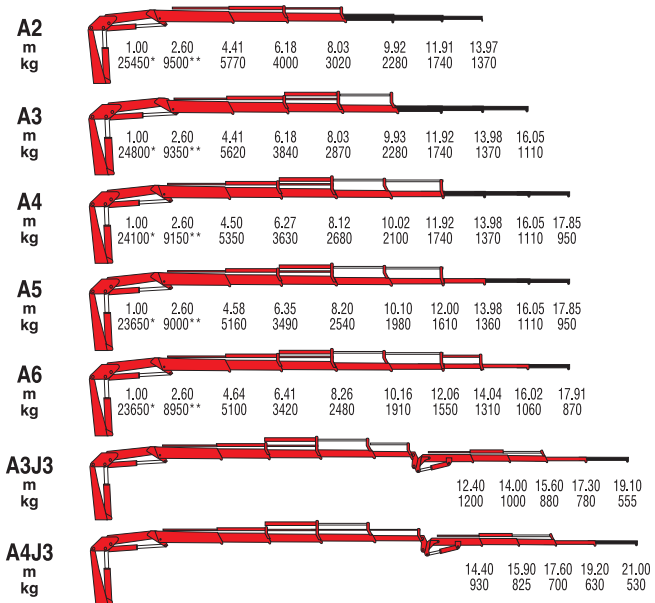




*) Theoretical lifting capacity
 **) Capacity at fixed hook (only if with load limiting device in EC area)

MODELS	LIFTING MOMENT	SLEWING ANGLE	WORKING PRESSURE	OIL TANK CAPACITY	MAX OIL FLOW	MAX. VERTICAL REACH (HYDR.)	CRANE WEIGHT (STAB. STANDARD)	DIMENSIONS
	tm	°	bar	l	l/min	m	kg	
A1	25,0	400	290	160	50	9,8	3020	2500x2320x1115
A2	-	400	290	160	50	11,6	3200	2500x2320x1115
A3	-	400	290	160	50	13,4	3340	2500x2320x1115
A4	-	400	290	160	50	15,3	3500	2500x2320x1115
A5	-	400	290	160	50	17,3	3640	2500x2320x1115
A6	-	400	290	160	50	19,3	3735	2540x2320x1200
A3J3	-	400	290	160	50	20,2	3890	2500x2430x1300
A4J3	-	400	290	160	50	22,1	4040	2500x2445x1300





*) Theoretical lifting capacity
 **) Capacity at fixed hook (only if with load limiting device in EC area)

MODELS	LIFTING MOMENT	SLEWING ANGLE	WORKING PRESSURE	OIL TANK CAPACITY	MAX OIL FLOW	MAX. VERTICAL REACH (HYDR.)	CRANE WEIGHT (STAB. STANDARD)	DIMENSIONS
	tm	°	bar	l	l/min	m	kg	mm BxhxS
A2	25,4	400	305	160	50	11,6	3250	2500x2320x1115
A3	-	400	305	160	50	13,4	3390	2500x2320x1115
A4	-	400	305	160	50	15,3	3550	2500x2320x1115
A5	-	400	305	160	50	17,3	3690	2500x2320x1115
A6	-	400	305	160	50	19,3	3785	2540x2320x1200
A3J3	-	400	305	160	50	20,2	3940	2500x2430x1300
A4J3	-	400	305	160	50	22,1	4090	2500x2445x1300



NEW AGE

**9000
Series**

***Endless slewing
with double linkage***

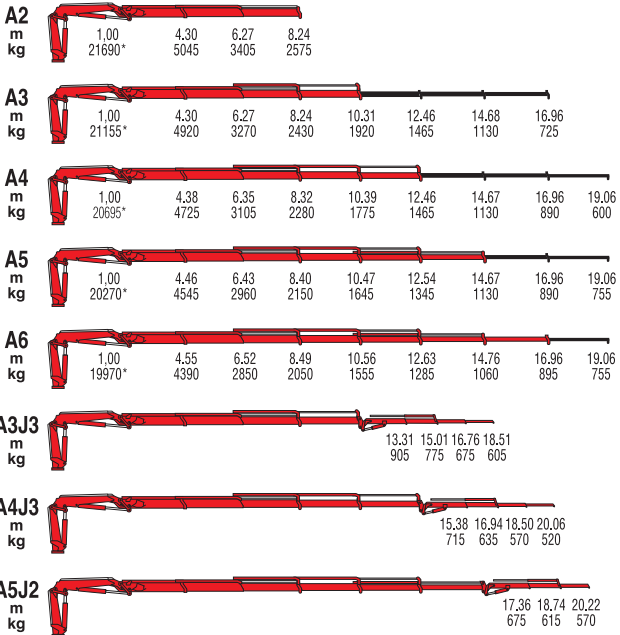
9235C

9265C

9601C

9661C





*) Theoretical lifting capacity

MODELS	LIFTING MOMENT	SLEWING ANGLE	WORKING PRESSURE	OIL TANK CAPACITY	MAX OIL FLOW	MAX. VERTICAL REACH (HYDR.)	CRANE WEIGHT (STAB. STANDARD)	DIMENSIONS
	tm	°	bar	l	l/min	m	kg	mm BxHxS
A2	21,7	Endless	345	130	80	12,0	2635	2535x2335x960
A3	-	Endless	345	130	80	14,1	2785	2535x2335x960
A4	-	Endless	345	130	80	16,2	2935	2535x2335x960
A5	-	Endless	345	130	80	18,4	3055	2535x2335x960
A6	-	Endless	345	130	80	20,7	3150	2535x2335x960
A3J3	-	Endless	-	130	80	22,2	3445	2550x2685x1095
A4J3	-	Endless	-	130	80	23,8	3425	2550x2590x1095
A5J2	-	Endless	-	130	80	23,9	3330	2550x2590x1095

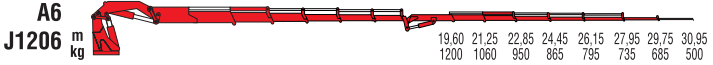
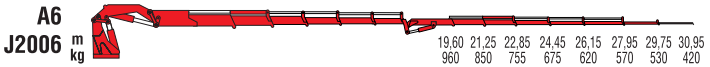
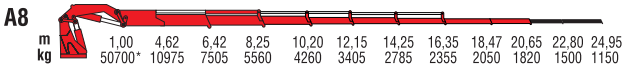
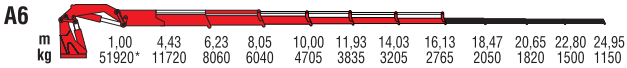
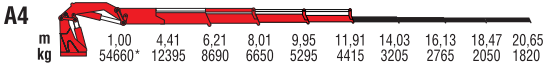
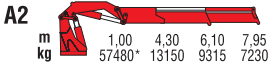




*) Theoretical lifting capacity

MODELS	LIFTING MOMENT	SLEWING ANGLE	WORKING PRESSURE	OIL TANK CAPACITY	MAX OIL FLOW	MAX. VERTICAL REACH (HYDR.)	CRANE WEIGHT (STAB. STANDARD)	DIMENSIONS
	tm	°	bar	l	l/min	m	kg	mm BxhxS
A2	24,8	Endless	345	130	80	11,7	2745	2530x2335x980
A3	-	Endless	345	130	80	13,8	2885	2530x2335x980
A4	-	Endless	345	130	80	15,9	3025	2530x2335x980
A5	-	Endless	345	130	80	18,1	3150	2530x2335x980
A6	-	Endless	345	130	80	20,3	3255	2530x2335x980
A7	-	Endless	345	130	80	22,5	3375	2530x2335x1055
A8	-	Endless	345	130	80	24,8	3465	2530x2335x1055
A4J3	-	Endless	355	130	80	24,1	3685	2550x2700x1100
A5J3	-	Endless	355	130	80	25,6	3640	2550x2595x1100
A6J2	-	Endless	350	130	80	25,9	3530	2540x2580x1100

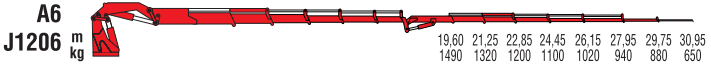
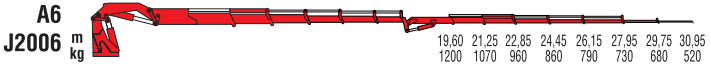
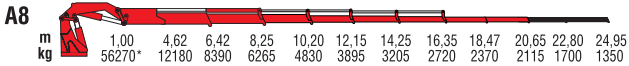
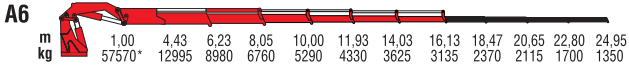
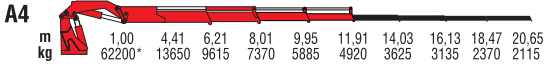




*) theoretical lifting capacity

MODELS	LIFTING MOMENT	SLEWING ANGLE	WORKING PRESSURE	OIL TANK CAPACITY	MAX OIL FLOW	MAX. VERTICAL REACH (HYDR.)	CRANE WEIGHT (STAB. STANDARD)	DIMENSIONS
	tm	°	bar	l	l/min	m	kg	mm BxhxS
A2	57,5	Endless	335	250	100	11,9	5375	2530x2430x1480
A4	-	Endless	335	250	100	15,9	5940	2530x2430x1480
A6	-	Endless	335	250	100	20,3	6465	2530x2430x1480
A8	-	Endless	335	300	100	24,7	6875	2550x2430x1635
A6J2002	-	Endless	-	250/300	100	26,6	7570	2550x2740x1665
A6J2004	-	Endless	-	250/300	100	30,1	7785	2550x2740x1665
A6J2006	-	Endless	-	250/300	100	33,8	7955	2550x2740x1665
A6J1206	-	Endless	-	250/300	100	33,8	7655	2550x2780x1665





*) theoretical lifting capacity

MODELS	LIFTING MOMENT	SLEWING ANGLE	WORKING PRESSURE	OIL TANK CAPACITY	MAX OIL FLOW	MAX. VERTICAL REACH (HYDR.)	CRANE WEIGHT (STAB. STANDARD)	DIMENSIONS
	tm	°	bar	l	l/min	m	kg	mm BxhxS
A2	63,2	Endless	365	250	100	11,9	5375	2530x2430x1480
A4	-	Endless	365	250	100	15,9	5940	2530x2430x1480
A6	-	Endless	365	250	100	20,3	6465	2530x2430x1480
A8	-	Endless	365	300	100	24,7	6875	2550x2430x1635
A6J2002	-	Endless	-	250/300	100	26,6	7570	2550x2740x1665
A6J2004	-	Endless	-	250/300	100	30,1	7785	2550x2740x1665
A6J2006	-	Endless	-	250/300	100	33,8	7955	2550x2740x1665
A6J1206	-	Endless	-	250/300	100	33,8	7655	2550x2780x1665



900 Series


***Endless slewing
with double linkage***


980


990R




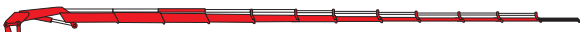



A2		3,00	4,15	5,85	7,65
m		23280*	16480	11840	9130
kg					

A4		3,00	4,22	5,95	7,75	9,65	11,55
m		22100*	15710	11140	8460	6730	5590
kg							

A6		3,00	4,37	6,10	7,87	9,80	11,70	13,70	15,70	17,70	19,70	22,10
m		21440*	14720	10360	7740	6060	4990	4180	3620	2710	2410	1760
kg												

A8		3,00	4,37	6,10	7,87	9,80	11,70	13,70	15,70	17,70	19,70	22,10	24,25	26,60
m		20860*	14320	9960	7310	5600	4480	3680	3110	2710	2410	1760	1600	1260
kg														

A10		3,00	4,65	6,35	8,15	10,10	11,95	13,95	15,95	17,95	19,95	22,10	24,25	26,60
m		20660*	13330	9240	6760	5110	4030	3240	2690	2310	2010	1760	1600	1260
kg														

A6J6		18,90	20,50	22,15	23,80	25,50	27,30	29,10	30,90
m		1605	1405	1255	1120	1020	940	850	580
kg									

*) Theoretical lifting capacity

MODELS	LIFTING MOMENT	SLEWING ANGLE	WORKING PRESSURE	OIL TANK CAPACITY	MAX OIL FLOW	MAX. VERTICAL REACH (HYDR.)	CRANE WEIGHT (STAB. STANDARD)	DIMENSIONS
	tm	°	bar	l	l/min	m	kg	mm BxhxS
A2	69,8	420	295	280	80	12,10	7450	2530x2450x1550
A4	-	420	295	280	80	16,00	8100	2530x2450x1550
A6	-	420	295	280	80	20,10	8700	2530x2450x1710
A8	-	420	295	280	80	24,20	9250	2530x2505x1735
A10	-	420	295	280	80	28,80	9650	2530x2635x1735
A6J6	-	420	295	280	80	33,50	10200	2530x2800x1840



990R



A2

m	3.00	4.15	5.85	7.65
kg	24660*	17510	12610	9670

A4

m	3.00	4.22	5.95	7.75	9.65	11.55
kg	23430*	16635	11815	8930	7080	5870

A6

m	3.00	4.37	6.10	7.87	9.80	11.70	13.70	15.70	17.70	19.70	22.10
kg	22570*	15495	10975	8250	6410	5240	4410	3820	2905	2590	1940

A8

m	3.00	4.37	6.10	7.87	9.80	11.70	13.70	15.70	17.70	19.70	22.10	24.25	26.60
kg	21970*	15085	10515	7745	5960	4810	3945	3340	2905	2590	1940	1755	1355

A10

m	3.00	4.65	6.35	8.15	10.10	11.95	13.95	15.95	17.95	19.95	22.10	24.25	26.60
kg	21770*	14045	9800	7185	5450	4335	3525	2935	2500	2195	1940	1755	1305

A6J6

m	18.90	20.50	22.15	23.80	25.50	27.30	29.10	31.10
kg	1705	1505	1365	1240	1130	1040	920	630

A8J4

m	22.40	24.10	25.85	27.60	29.40	31.30
kg	950	850	775	710	660	550

*) Theoretical lifting capacity

MODELS	LIFTING MOMENT	SLEWING ANGLE	WORKING PRESSURE	OIL TANK CAPACITY	MAX OIL FLOW	MAX. VERTICAL REACH (HYDR.)	CRANE WEIGHT (STAB. STANDARD)	DIMENSIONS
	tm	°	bar	l	l/min	m	kg	mm BxhxS
A2	74	Endless	315	280	100	12,10	7450	2530x2450x1550
A4	-	Endless	315	280	100	16,00	8100	2530x2450x1550
A6	-	Endless	315	280	100	20,10	8700	2530x2450x1710
A8	-	Endless	315	280	100	24,20	9250	2530x2505x1735
A10	-	Endless	315	280	100	28,80	9650	2530x2635x1735
A6J6	-	Endless	315	280	100	33,50	10200	2530x2800x1840
A8J4	-	Endless	315	280	100	33,80	10100	2545x2875x1840



NEW AGE

7000D
Series

Telescopic boom

7092D

7112D

7130D

7162D

7212D

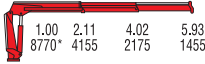
7240D



7000D

7092D A2

m
kg



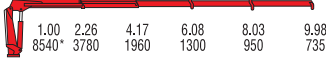
7092DA3

m
kg



7092D A4

m
kg



7112D A2

m
kg



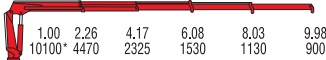
7112DA3

m
kg



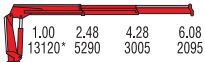
7112D A4

m
kg



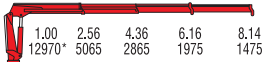
7130D A2

m
kg



7130DA3

m
kg



7130D A4

m
kg

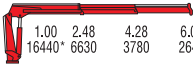


*) Theoretical lifting capacity

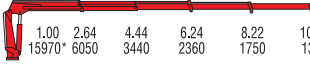
MODELS	LIFTING MOMENT	SLEWING ANGLE	WORKING PRESSURE	OIL TANK CAPACITY	MAX OIL FLOW	MAX. VERTICAL REACH (HYDR.)	CRANE WEIGHT (STAB. STANDARD)	DIMENSIONS
	tm		bar		l		l/min	
7092D A2	8,7	425	310	75	40	9,2	1055	2315x2295x825
7092D A3	-	425	310	75	40	11,1	1150	2315x2295x825
7092D A4	-	425	310	75	40	13,1	1225	2315x2295x825
7112D A2	10,2	425	300	75	40	9,2	1220	2320x2310x830
7112D A3	-	425	300	75	40	11,2	1325	2320x2310x830
7112D A4	-	425	300	75	40	13,1	1410	2320x2310x830
7130D A2	13,1	425	285	130	30	9,80	1495	2475x2300x830
7130D A3	-	425	285	130	30	11,8	1595	2475x2300x830
7130D A4	-	425	285	130	30	13,8	1690	2475x2300x830



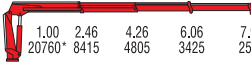
7000D

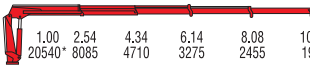
7162D A2	
m	1.00 2.48 4.28 6.08
kg	16440* 6630 3780 2645

7162DA3	
m	1.00 2.56 4.36 6.16 8.14
kg	16270* 6355 3620 2510 1880

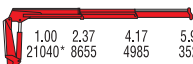
7162D A4	
m	1.00 2.64 4.44 6.24 8.22 10.20
kg	15970* 6050 3440 2360 1750 1395

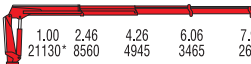
7212D A2	
m	1.00 2.37 4.17 5.97
kg	20210* 8510 4845 3385

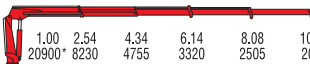
7212DA3	
m	1.00 2.46 4.26 6.06 7.99
kg	20760* 8415 4805 3425 2510

7212D A4	
m	1.00 2.54 4.34 6.14 8.08 10.02
kg	20540* 8085 4710 3275 2455 1900

7212D A5	
m	1.00 2.62 4.42 6.22 8.16 10.10 12.03
kg	19000* 7250 4265 2955 2180 1760 1380

7240D A2	
m	1.00 2.37 4.17 5.97
kg	21040* 8655 4985 3525

7240DA3	
m	1.00 2.46 4.26 6.06 7.99
kg	21130* 8560 4945 3465 2645

7240D A4	
m	1.00 2.54 4.34 6.14 8.08 10.02
kg	20900* 8230 4755 3320 2505 2005

7240D A5	
m	1.00 2.62 4.42 6.22 8.16 10.10 12.03
kg	19430* 7385 4395 3040 2270 1825 1490

*) Theoretical lifting capacity

MODELS	LIFTING MOMENT	SLEWING ANGLE	WORKING PRESSURE	OIL TANK CAPACITY	MAX OIL FLOW	MAX. VERTICAL REACH (HYDR.)	CRANE WEIGHT (STAB. STANDARD)	DIMENSIONS
	tm	°	bar	l	l/min	m	kg	mm BxhxS
7162D A2	16,4	425	290	130	30	9,8	1620	2485x2300x830
7162D A3	-	425	290	130	30	11,8	1735	2485x2300x830
7162D A4	-	425	290	130	30	13,8	1825	2485x2300x830
7212D A2	20,2	415	315	130	80	9,7	1945	2520x2400x870
7212D A3	-	415	315	130	80	11,7	2090	2520x2400x870
7212D A4	-	415	315	130	80	13,7	2210	2540x2400x870
7212D A5	-	415	300	130	80	15,7	2305	2540x2400x870
7240D A2	20,5	415	335	130	80	9,7	1945	2520x2400x870
7240D A3	-	415	335	130	80	11,7	2090	2520x2400x870
7240D A4	-	415	335	130	80	13,7	2210	2540x2400x870
7240D A5	-	415	320	130	80	15,7	2305	2540x2400x870

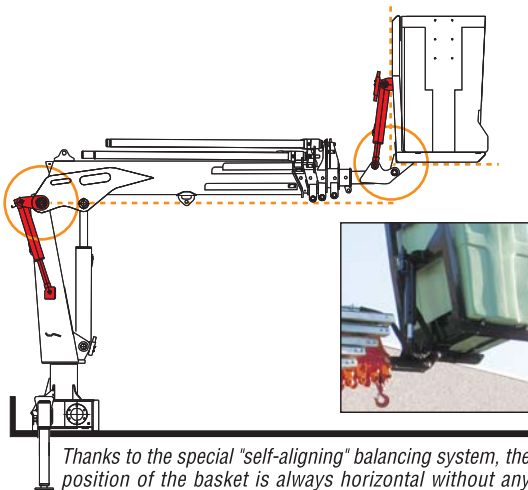


SKY

***Self-Aligning
basket***

058D

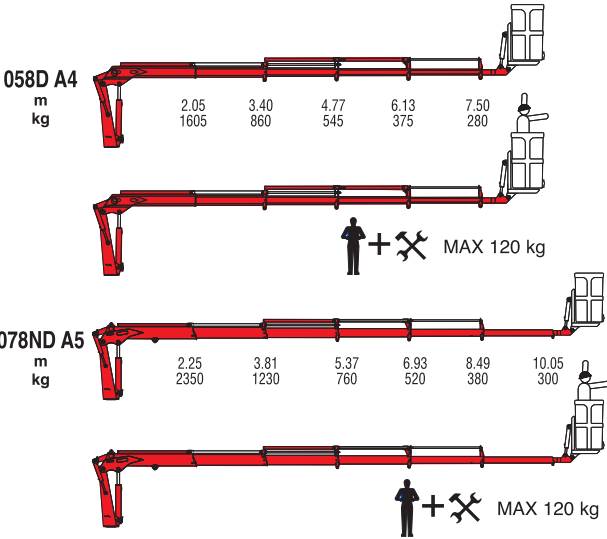
078ND



Thanks to the special "self-aligning" balancing system, the position of the basket is always horizontal without any intervention from the user.

For non-CE markets only

SKY



MODELS	LIFTING MOMENT	SLEWING ANGLE	WORKING PRESSURE	OIL TANK CAPACITY	MAX OIL FLOW	MAX. VERTICAL REACH (HYDR.)	CRANE WEIGHT (STAB. STANDARD)	DIMENSIONS
	tm	°	bar	l	l/min	kg	kg	mm BxhxS
058D A4	3,29	380	220	35	15	13,30	940	3305x1940x850
078ND A5	5,29	387	220	35	18	16,00	1260	3765x2080x850



Features & Accessories



7000 - 9000 **NEW AGE**

New crane line sets new standards in design, performances, reliability and safety for truck mounted cranes.

A new control station, incorporating both crane and stabiliser controls, has an ergonomic working position and user-friendly interface which delivers better operator efficiency and safety together with improved productivity.

Dynamic Load Diagram allows advance verification of the crane lifting capacity based on the truck stability, and, Magic Touch allows automatic folding and unfolding to transport and working positions.

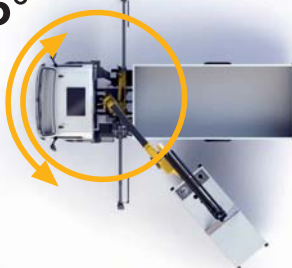
There are several options for radio remote control and a wide range of stabiliser configurations to ensure safe positioning of the truck in all ground conditions.

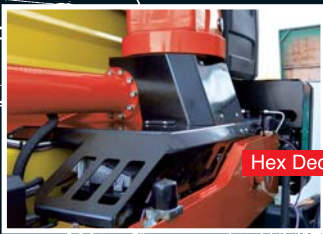


The wide slewing angle, 425°, is best-in-class for medium sized cranes. And, with an extensive range of accessories and attachments, the cranes are suited to a wide range of applications.

Durability and lifetime value too is high with enhanced resistance to adverse environmental conditions as a result of a long life painting process, anti-corrosion treatments on non-painted components, protected rubber hose tracks and assembly of components using specialist tools.

425°





Hex Deck cover on base

Functional aesthetic

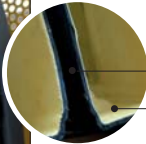
NEW AGE



Robust structural design and hose covers.



High volume oil tank made in sandwich-structured materials.



- 1st layer, PEX
- 2nd layer, PA6



TOP 7" colour display

New control station

NEW AGE



The most ergonomic working position and user-friendly interface

Safe and fast stabilisation with outstanding supervision for operator.



LED lights on booms and controls for night working.
(only CE radio configuration)



Magic Touch

NEW AGE



Focus on innovation

A graphic display which allows the driver, after truck stabilisation, to automatically fold (from any position to transport position) and unfold (to working position) when required. This easy-to-use function improves driver attention, promotes safe operation, saves time and can increase productivity.



Dynamic Load Diagram

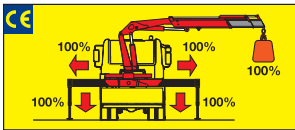


Focus on innovation

A new system which allows the driver to verify in advance the crane lifting capacity based on the truck stability. The operator can select the weight and, according to the stabiliser positions, the system calculates the stability all around the truck. A graphical display shows the outreach available for the load selected and the actual boom slewing position. This system, a first on truck-mounted articulated cranes, optimises stabilisation and makes crane operation safer and more efficient. Easy to use, saves time and improves safety through better crane stabilisation and avoidance of border line working conditions.

Stability control systems (CE)

FS System

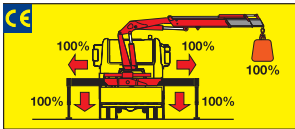


The **FS System** integrated in the load limiting device checks the stabilizers' positions. Only when all beams are fully open and all stabilizers are on the ground the crane can operate and lift loads.



Control display

FM System

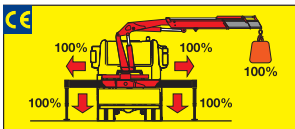


The **FM System** integrated in the load limiting device checks the stabilizers' positions. Only when all beams are fully open and all stabilizers are on the ground the crane can operate and lift loads.



Control display

FML System



The **FML System** integrated in the load limiting device checks the stabilizers' positions. Only when all beams are fully open and all stabilizers are on the ground the crane can operate and lift loads.

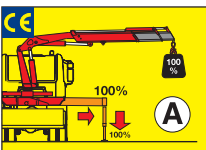


Control display



RADIOCONTROL

FL System

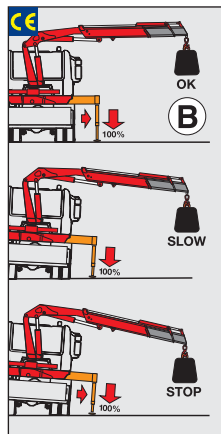


The **FL system** checks the stabilizers' positions and the truck's inclination.

According to the beams' positions, the system allows two operating modes:

Mode A - all beams fully open and all stabilizer feet on the ground.

Mode B - stabilizers on the ground only.



In **mode A**: the load limiting device stops the crane when the crane reaches 100% of the nominal capacity.

In **mode B**: a dedicated sensor monitors the truck's inclination. The load limiting device stops the crane before it reaches an inclination angle dangerous for stability, or when the crane reaches its nominal capacity.



Control display

Models	STANDARD					RADIO				
	FS	FM	FXL	F2XL	F3XL	FML	FL	F2XL	F3XL	F4XL
310										
314										
315	•					•	OPT			
317	•					•	OPT			
321										
322	•					•	OPT			
326	•					•	OPT			
329										
330	•					•	OPT			
350	•					•	OPT			
531		OPT				OPT				
538		OPT				OPT				
540		OPT				OPT				
541		OPT				OPT				
550		•				•				
551		•				•	OPT			
561			•			•	OPT			
571			•			•	OPT			
581			•					•		
■ 7090B					•				•	OPT
■ 7091C					•				•	OPT
■ 7091SC					•				•	OPT
■ 7095C					•				•	OPT
■ 7103C R									•	OPT
■ 7111C					•				•	OPT
■ 7111SC					•				•	OPT
■ 7112B					•				•	OPT
■ 7121C R									•	OPT
■ 7125C									•	OPT
■ 7130B					•				•	OPT
■ 7131C					•				•	OPT
■ 7131SC					•				•	OPT
■ 7143C					•				•	OPT
■ 7153C R									•	OPT
■ 7160B					•				•	OPT
■ 7161C					•				•	OPT
■ 7161SC					•				•	OPT
■ 7173C					•				•	OPT
■ 7183C R									•	OPT
■ 7210B					•				•	OPT
■ 7213C					•				•	OPT
■ 7213SC					•				•	OPT
■ 7223C					•				•	OPT
■ 7231C R									•	OPT
■ 7240B					•				•	OPT
■ 7243C					•				•	OPT
■ 7243SC					•				•	OPT
■ 7245C					•				•	OPT
■ 7261C R									•	OPT

R = Radiocontrol SC = Short Crane ■ New Age

Radio remote control



Hetronic "Single Hand"



RADIOCONTROL



Scanreco

The operator can control the crane with high precision proportional levers in every position and, doing so, can supervise the loading and unloading operations.

That means a great time saving and a higher safety.



Hetronic Not CE

All the remote controls used by F.lli FERRARI have an identification code and are shielded from electromagnetic fields and from external radio signals.



Hetronic CE Basic

Only the model 990R is standard equipped with CANBUS radio remote control on both CE and NO CE versions.

The transmitter is equipped with a large display.

Watching this display the operator always knows the lifting condition of the crane and is informed about possible warning messages or alarm codes. The data displayed is an exact copy of the data present on the ECM. The transmitter is equipped with an ON-OFF switch in order to allow the user to engage the accessories (Winch, Grab/Rotator, Jib) without the necessity to use the buttons on the ECM. As on the standard transmitters, the CAN-Bus radio also allows control of the truck engine.



Hetronic CE Graphic



4" TFT HD-color display to keep the crane always under control

RDC

Innovative "Single Hand" radio remote control by Hetric

- Transmitter with compact dimensions and minimal weight
- Proportional speed control
- Single-hand control of every crane function by radio
- Safe stabilizer operation by radio control
- Cable control (optional)
- Transmitter operation with two 'AA' batteries.*



FUNCTION SELECTION

PROPORTIONAL SPEED CONTROL



(*)



HETRONIC

A crane in the palm of your hand

Transmitter with compact dimensions and reduced weight



Receiver



Key selector box



Sectional electro-hydraulic control valve by Bosch Rexroth

Up to 2 extra activations for control of bucket and rotator or winch;

Proportional valve for the regulation of speed;

Manual levers for emergency use.



Visual, acoustic and luminous warning of 90% - 100% of the nominal capacity

With limiter device.



Visual signaling of the load (With limiter)

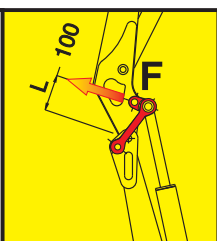
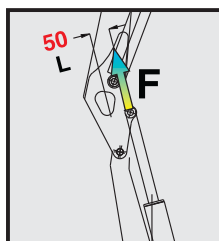
Digital readout in bar of the load induced pressure.



TWICE THE POWER*

STANDARD

RED POWER



Power = F x L

F = Strength of the lifting cylinder

L = Lever of the lifting cylinder

POWER 50%

POWER 100%

*"Red Power" means more leverage to the crane booms.
This leverage is achieved through an articulating connecting rod system.*

**) In vertical position*

Constant capacity in all positions

"Red Power" brings more leverage to the crane booms and increases crane versatility for many working positions.

The double linkage joins the articulation cylinder to the boom. Its design raises the mechanical advantage of the articulation, to provide consistent force through all working angles.



OFP

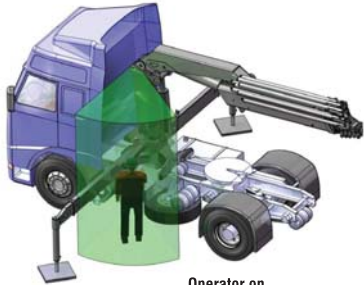
Operator Full Protection

"The green area surrounding the operator represents the space where the crane's boom cannot enter."

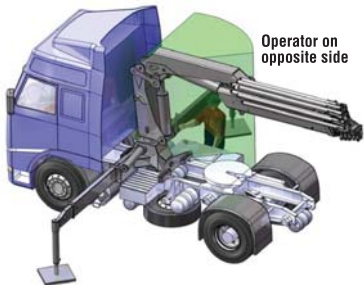
Our technical department developed a new safety system which monitors the control position where the operator is moving the crane, and prevents the crane's booms from entering the zone close to the operator.

Two presence sensors are mounted on the crane's control stations in order to verify where the operator is working, and other sensors monitor the control levers' positions. By sensors applied between the base and the column, the safety system can monitor the slewing sector where the crane is located. Two level sensors constantly monitor the position of the two booms.

Once the operator starts working from a control station, the Operator Full Protection System generates a limitation zone around him in order to avoid any interference between the operator and the crane.



Operator on control valve side



Operator on opposite side



RLC

This device shows the load at the hook on a display placed near the controls, making safe the use of the mechanical booms following the European rule EN12999. In case of a CE crane with mechanical booms it is mandatory to mount the RLC device.

Data, descriptions, and illustrations pertain only and uniquely to models sold at the time of printing of this brochure. After the date of printing, this information is purely indicative and not binding upon F.lli Ferrari. Future modifications are solely at the discretion of F.lli Ferrari and are always in compliance with applicable and pertinent safety standards. To obtain updated data, descriptions, and illustrations, contact the manufacturer or your reseller. Cranes manufactured and/or marketed by F.lli Ferrari.

F.lli Ferrari in the World



DEALER



Via Einstein, 4
42028 Poviglio (RE) Italy
Tel. +39 0522/486308
Fax +39 0522/486330
info@flliferrari.it
marketing@flliferrari.it
www.flliferrari.com

